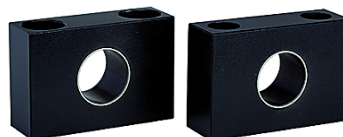


# K-SCHWENKLAGER TYP TM

Hinge model, »TM« type (only in conjunction with hinge head model, »FTC« type)

**HANSA FLEX**



## Item

Identification	Ø piston
K- 07 15 23 74	32 mm
K- 07 15 23 75	40 - 50 mm
K- 07 15 23 76	63 - 80 mm
K- 07 15 23 77	100 - 125 mm

## Accessory for following products

**K-NORMZYLINDER AIRSENTIALS SE** Standard cylinders - AirSentials