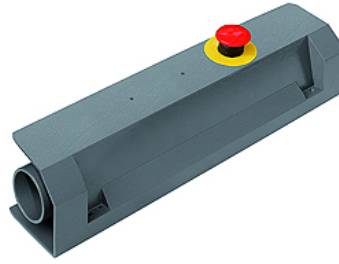


# K-ZWEIHAND S KONSOLE KOMPL

Complete pushbutton panel

## Properties

<b>Media</b>	Filtered, unlubricated compressed air
<b>Operating pressure</b>	2.5 - 8 bar
<b>Temp. range</b>	-10 °C to +60 °C
<b>Connection</b>	Push-in fitting for pipe 4 mm
<b>Operation</b>	Pneumatic
<b>Flow rate air 6bar</b>	85 NI/min
<b>max. time-offset input signal</b>	0,4 s



## Note

Further information on request

## Description

This pushbutton panel according to EN574 Type III A is comprised of a dual manual control valve with a housing and manifold. The valve only generates an output signal if two synchronised input signals are received within < 0.4 sec. If one input signal is interrupted, the output signal is interrupted as well. An emergency stop valve with a mushroom pushbutton is included. The housing can be screwed to the wall in any position. The valve manifold can optionally be supplied without the housing and with a DIN bar adapter. Applications: Two-hand safety valve for start-of-cycle control on a pneumatically operated machine.

## Item

Identification	Designation
K- 07 15 26 08	Complete pushbutton panel with safety valve