

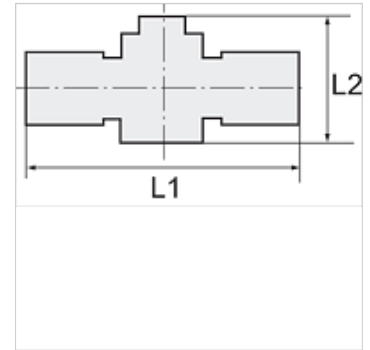
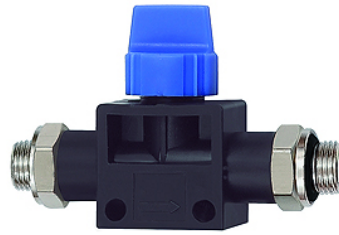
K-WV 3/2 AG OR

3/2-way pilot valves with parallel male thread with O-ring

HANSA FLEX

Properties

| | |
|------------------------------|--|
| Working pressure | Max. 15 bar, coarse vacuum |
| Application | Air, vacuum |
| Recommended hoses | PU or PA (nylon) |
| Media | Compressed air and all gases or liquids that are compatible with the materials |
| Temp. range | -20 °C to +80 °C |
| Sealing surface | Parallel version: O-ring in housing, Conical version: thread coating |
| Material | Plastic, Nickel plated brass |
| Contact pressure ring | Plastic |



Note

Further information on request

Description

Push-in fittings series manufactured in plastic and nickel-plated brass. All parts are suitable for use with hoses, tubes or pipes made of plastic and copper.

Item

| Identification | Thread 1 | Thread 2 | L1 (mm) | L2 (mm) |
|----------------|----------|----------|------------|------------|
| K- 07 40 46 28 | G 1/8 | G 1/8 | 65,0 | 41,5 |
| K- 07 40 46 27 | G 1/4 | G 1/4 | 68,0 | 41,5 |
| K- 07 40 46 29 | G 3/8 | G 3/8 | 81,5 | 46,0 |