

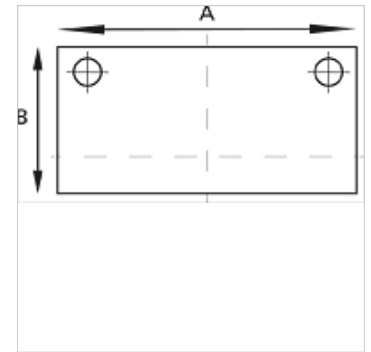
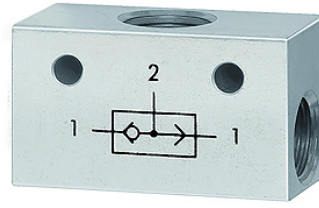
# K-ODER-VENTIL

OR valves

**HANSA FLEX**

## Properties

Operating pressure	2 - 10 bar
Temp. range	-10 °C to +80 °C
Flow rate at 6,3 bar and 1 bar	500 NI/min (G 1/8), 1300 NI/min (G 1/4)
Valve body	Aluminium
Ball	Stainless steel
Seals	NBR



## Note

Further information on request

## Description

The valve has two inlets and one outlet. A signal appears at the outlet when the left or right inlet is pressurised. <br>If the pressure at the two inlets is different, the stronger of the two signals appears at the outlet.

## Item

Identification	Thread	A (mm)	B (mm)
K- 07 15 26 05	3 x G 1/8	36,0	20,0
K- 07 15 26 04	3 x G 1/4	43,0	25,0