

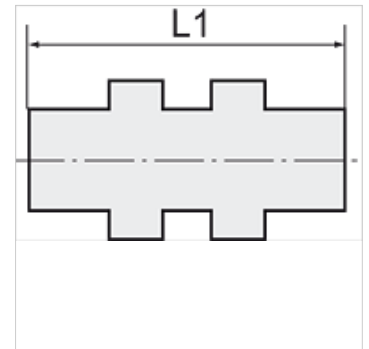
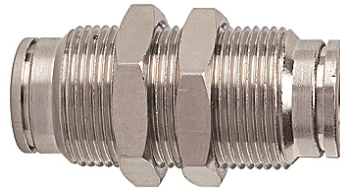
K-SCHOTT-STECKVERB 2

Female bulkhead connectors

HANSA FLEX

Properties

Working pressure	Max. 16 bar
Operating temperature	-20 °C to +150 °C
Material	Nickel-plated brass
Contact pressure ring	Nickel-plated brass
Clamping ring	Stainless steel



Note

Further information on request

Description

Push-in fittings, manufactured entirely in nickel-plated brass. All parts with a parallel thread are supplied with an FPM O-ring. All parts with conical threads are coated with preCOTE 5 dispersion, all fittings in this series can thus also be used at high temperatures (medium compressed air).

Item

Identification	Thread	for external hose Ø	L1 (mm)	AF
K- 07 40 27 61	M 10 x 1	4 mm	31,5	13 mm
K- 07 40 27 62	M 14 x 1	6 mm	33,5	17 mm
K- 07 40 27 63	M 16 x 1	8 mm	37,0	18 mm
K- 07 40 27 64	M 17 x 1	10 mm	39,5	20 mm
K- 07 40 47 83	M 20 x 1	12 mm	42,0	24 mm
K- 07 40 47 84	M 22 x 1	14 mm	46,0	25 mm