

K-REED-SCHALTER D

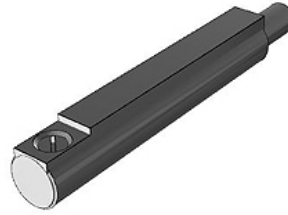
Reed switch D

Properties

Electrical inlet axial

Cable length 3 m

Series D



Description

Reed switch, series D-A93, direct mounting in round profile groove, version: electrical input port axial, with LED, with cast-in cable, cable length 3.0 m

Item

Identification	Design	Designation
K- 07 50 00 01	with LED, with grommet, without connector	Reed-switch
K- 07 50 00 02	with LED, with M8 connector (3 pin)	Reed-switch