

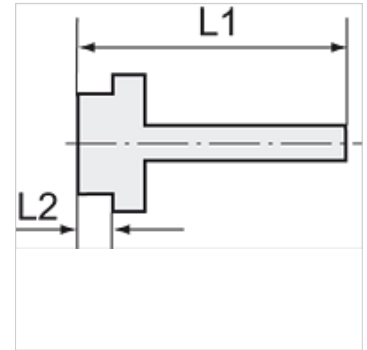
K-EST 12 MS

Male stems for coupling NW12 MS

HANSA FLEX

Properties

Working pressure	10 bar
Media temperature	max. +90 °C
Ambient temperature	Max. +90 °C
Material	Brass with a bare metal surface



Note

The dimensions of the standard screw fittings may change slightly during the life of the catalogue as a result of optimisation processes. Further information on request

Additional information

Further types and dimensions on request.

Item

Identification	Thread	for hose	L1 (mm)	L2 (mm)	AF
K- 07 35 00 88	G 1/2	LW 16 mm	58,0	10,0	20 mm