

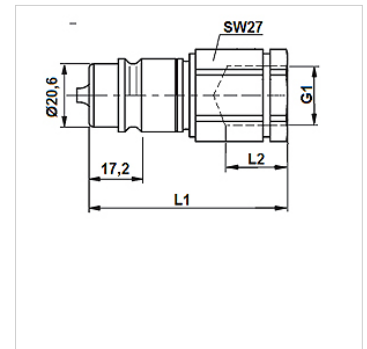
SKS IR AGRAR

Plug-in coupling connector



Properties

Application	Agricultural technology Industry
Connection 1	BSP cylindrical internal threads
Sealing form 1	for screw-in pins with shapes A, B and if necessary E
Standard	complies with ISO 7241 series A
Operating pressure	max. 250 bar
Volumetric flow	max. 240 l/min, in combination with SKS Agrar
Temp. range	-30 °C to +100 °C
Material	Steel
Surface	electro galvanised



Note

With standard threaded connections in determining the operating pressure of the maximum rated pressure is taken into account.

Description

The consistent refinement of this plug fulfils the extreme requirements demanded in practice.

Additional information

The coupling Agrar exceeds the requirements of ISO 7241-1 series A and ISO 5675 for the agricultural sector and is uncompromisingly designed for maximum efficiency. The Agrar male connector and Agrar sleeve system achieves a maximum volumetric flow of 240 litres per minute - a record level. Operation in heavy-duty tractors and implements such as tipplers, is now safe.

The coupling sleeve is available in two different overall lengths and is therefore compatible with the common commercially available built-in couplings.

Item								
Identification	DN*	G1	AF (mm)	L1 (mm)	L2 (mm)	Size	SF coup.*	Weight (kg)
SKS 10 IR 3 AGRAR	10	G 3/8" -19	27	68,0	15,0	3	4	0,153
SKS 13 IR 3 AGRAR	12	G 1/2" -14	27	70,0	17,0	3	4	0,092

DN = Nominal diameter, nominal width – SF gek. = Safety factor coupled

Accessories

SKS ZUBS Dust protection coupling connector, SKS..