

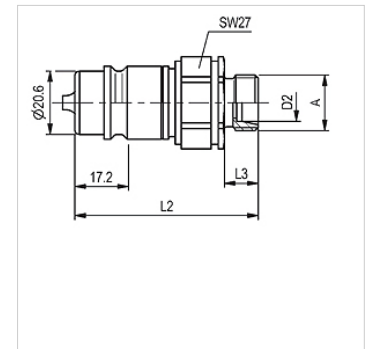
SKS HL AGRAR

Plug-in coupling connector



Properties

Application	Agricultural technology Industry
Connection 1	metric cylindrical outer thread
Sealing form 1	24° inner cone
Standard	complies with ISO 7241 series A
Operating pressure	max. 250 bar
Volumetric flow	max. 240 l/min, in combination with SKS Agrar
Temp. range	-30 °C to +100 °C
Material	Steel
Surface	electro galvanised



Note

With standard threaded connections in determining the operating pressure of the maximum rated pressure is taken into account.

Description

The consistent refinement of this plug fulfils the extreme requirements demanded in practice.

Item									
Identification	DN*	Series	for external pipe Ø (mm)	Connecting thread	L1 (mm)	L2 (mm)	Size	SF coup.*	Weight (kg)
SKS 10 HL 3 AGRAR	10	L	12	M 18x1,5	60,0	11,0	3	4	0,109
SKS 13 HL 3 AGRAR	12	L	15	M 22x1,5	61,0	12,0	3	4	0,117
SKS 16 HL 3 AGRAR	16	L	18	M 26x1,5	61,0	12,0	3	4	0,119

DN = Nominal diameter, nominal width – SF gek. = Safety factor coupled

Accessories

SKS ZUBS Dust protection coupling connector, SKS..