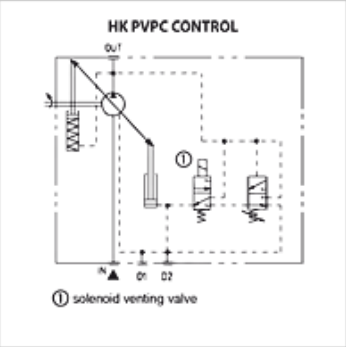


# HK PVPC CONTROL

Venting valve unit



Properties	
Use	For pressure regulator CH for axial piston pump



**Note**  
For retrofitting HK PVPC axial piston pumps on pressure regulator with venting function (type CH)

**Description**  
The valve consists of a 2/2-way solenoid cartridge valve 24 VDC with housing that is fitted between the pump and existing pressure regulator

Item	
Identification	Weight (kg)
HK CH PVPC 2015	0,5

Accessory for following products	
HK PVPC	PVPC axial piston pump