

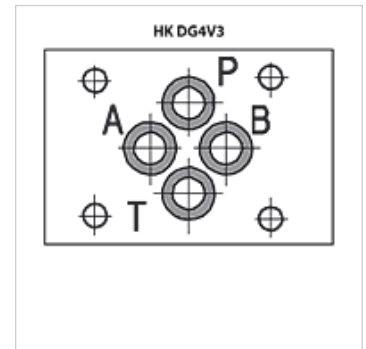
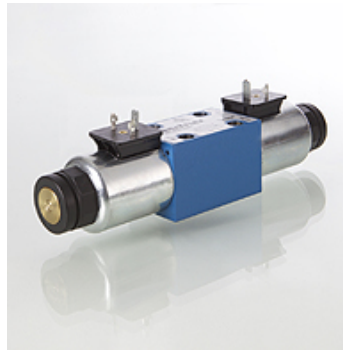
HK DG4V3

Solenoid-operated directional control valve NG6

HANSA FLEX

Properties

Design	4/2-way valve or 4/3-way valve with manual emergency operation
Scope of supply	with coil, without plug
Operating pressure	P, A, B: max. 350bar / T: max. 210bar
Volumetric flow	max. 80 l/min (note characteristic curves)
Connection	ISO/Cetop 03 size 6
Mounting	4 pcs. socket head screw M5x30 12.9
protection class	IP 65



Description

switching capacity limits see characteristic curves

Ordering information

Further circuits and versions, volumetric flows and switching power limits on request

Item	Identification	Type	Piston type	Rated voltage/ current type	Overlap	Design	Weight (kg)
HK DG4V3 0A VM U 12DC	4/2	0A	[PB/AT]-[PA/BT]	12 VDC	negative (open)	Spring return	1,60
HK DG4V3 0A VM U 24DC	4/2	0A	[PB/AT]-[PA/BT]	24 VDC	negative (open)	Spring return	1,60
HK DG4V3 0A VM U 110AC	4/2	0A	[PB/AT]-[PA/BT]	110 VAC	negative (open)	Spring return	1,60
HK DG4V3 0A VM U 230AC	4/2	0A	[PB/AT]-[PA/BT]	230 VAC 50 Hz	negative (open)	Spring return	1,60
HK DG4V3 0B VM U 12DC	4/2	0B	[PB/AT]-[ABPT]	12 VDC	negative (open)	Spring return	1,60
HK DG4V3 0B VM U 24DC	4/2	0B	[PB/AT]-[ABPT]	24 VDC	negative (open)	Spring return	1,60
HK DG4V3 0B VM U 110AC	4/2	0B	[PB/AT]-[ABPT]	110 VAC	negative (open)	Spring return	1,60
HK DG4V3 0B VM U 230AC	4/2	0B	[PB/AT]-[ABPT]	230 VAC 50 Hz	negative (open)	Spring return	1,60
HK DG4V3 2A VM U 12DC	4/2	2A	[PB/AT]-[PA/BT]	12 VDC	positive (closed)	Spring return	1,60
HK DG4V3 2A VM U 24DC	4/2	2A	[PB/AT]-[PA/BT]	24 VDC	positive (closed)	Spring return	1,60
HK DG4V3 2A VM U 110AC	4/2	2A	[PB/AT]-[PA/BT]	110 VAC	positive (closed)	Spring return	1,60
HK DG4V3 2A VM U 230AC	4/2	2A	[PB/AT]-[PA/BT]	230 VAC 50 Hz	positive (closed)	Spring return	1,60
HK DG4V3 2AL VM U 12DC	4/2	2AL	[PB/AT]-[PA/BT]	12 VDC	positive (closed)	Spring return	1,60
HK DG4V3 2AL VM U 24DC	4/2	2AL	[PB/AT]-[PA/BT]	24 VDC	positive (closed)	Spring return	1,60
HK DG4V3 2AL VM U 110AC	4/2	2AL	[PB/AT]-[PA/BT]	110 VAC	positive (closed)	Spring return	1,60
HK DG4V3 2AL VM U 230AC	4/2	2AL	[PB/AT]-[PA/BT]	230 VAC 50 Hz	positive (closed)	Spring return	1,60
HK DG4V3 2B VM U 12DC	4/2	2B	[PB/AT]-[A/B/P/T]	12 VDC	positive (closed)	Spring return	1,60
HK DG4V3 2B VM U 24DC	4/2	2B	[PB/AT]-[A/B/P/T]	24 VDC	positive (closed)	Spring return	1,60
HK DG4V3 2B VM U 110AC	4/2	2B	[PB/AT]-[A/B/P/T]	110 VAC	positive (closed)	Spring return	1,60
HK DG4V3 2B VM U 230AC	4/2	2B	[PB/AT]-[A/B/P/T]	230 VAC 50 Hz	positive (closed)	Spring return	1,60
HK DG4V3 6B VM U 12DC	4/2	6B	[PB/AT]-[ABT/P]	12 VDC	positive (closed)	Spring return	1,60
HK DG4V3 6B VM U 24DC	4/2	6B	[PB/AT]-[ABT/P]	24 VDC	positive (closed)	Spring return	1,60
HK DG4V3 6B VM U 110AC	4/2	6B	[PB/AT]-[ABT/P]	110 VAC	positive (closed)	Spring return	1,60
HK DG4V3 6B VM U 230AC	4/2	6B	[PB/AT]-[ABT/P]	230 VAC 50 Hz	positive (closed)	Spring return	1,60
HK DG4V3 8BL VM U 12DC	4/2	8BL	[PA/BT]-[A/B/P/T]	12 VDC	negative (open)	Spring return	1,60
HK DG4V3 8BL VM U 24DC	4/2	8BL	[PA/BT]-[A/B/P/T]	24 VDC	negative (open)	Spring return	1,60
HK DG4V3 8BL VM U 110AC	4/2	8BL	[PA/BT]-[A/B/P/T]	110 VAC	negative (open)	Spring return	1,60
HK DG4V3 8BL VM U 230AC	4/2	8BL	[PA/BT]-[A/B/P/T]	230 VAC 50 Hz	negative (open)	Spring return	1,60
HK DG4V3 22A VM U 12DC	4/2	22A	[PB/AT]-[PA/B/T]	12 VDC	positive (closed)	Spring return	1,60
HK DG4V3 22A VM U 24DC	4/2	22A	[PB/AT]-[PA/B/T]	24 VDC	positive (closed)	Spring return	1,60
HK DG4V3 22A VM U 110AC	4/2	22A	[PB/AT]-[PA/B/T]	110 VAC	positive (closed)	Spring return	1,60
HK DG4V3 22A VM U 230AC	4/2	22A	[PB/AT]-[PA/B/T]	230 VAC 50 Hz	positive (closed)	Spring return	1,60
HK DG4V3 0C VM U 12DC	4/3	0C	[PB/AT]-[ABPT]-[PA/BT]	12 VDC	negative (open)	spring return to 0	2,20
HK DG4V3 0C VM U 24DC	4/3	0C	[PB/AT]-[ABPT]-[PA/BT]	24 VDC	negative (open)	spring return to 0	2,20
HK DG4V3 0C VM U 110AC	4/3	0C	[PB/AT]-[ABPT]-[PA/BT]	110 VAC	negative (open)	spring return to 0	2,20
HK DG4V3 0C VM U 230AC	4/3	0C	[PB/AT]-[ABPT]-[PA/BT]	230 VAC 50 Hz	negative (open)	spring return to 0	2,20
HK DG4V3 2C VM U 12DC	4/3	2C	[PB/AT]-[A/B/P/T]-[PA/BT]	12 VDC	positive (closed)	spring return to 0	2,20
HK DG4V3 2C VM U 24DC	4/3	2C	[PB/AT]-[A/B/P/T]-[PA/BT]	24 VDC	positive (closed)	spring return to 0	2,20
HK DG4V3 2C VM U 110AC	4/3	2C	[PB/AT]-[A/B/P/T]-[PA/BT]	110 VAC	positive (closed)	spring return to 0	2,20
HK DG4V3 2C VM U 230AC	4/3	2C	[PB/AT]-[A/B/P/T]-[PA/BT]	230 VAC 50 Hz	positive (closed)	spring return to 0	2,20
HK DG4V3 6C VM U 12DC	4/3	6C	[PB/AT]-[ABT/P]-[PA/BT]	12 VDC	positive (closed)	spring return to 0	2,20



Despite careful checking, we cannot guarantee the accuracy of all information included on this site, and we accept no liability.

24.04.2025

HANSA-FLEX AG

www.hansa-flex.com

1

HK DG4V3

Solenoid-operated directional control valve NG6



Item							
Identification	Type	Piston type		Rated voltage/ current type	Overlap	Design	Weight (kg)
HK DG4V3 6C VM U 24DC	4/3	6C	[PB/AT]-[ABT/P]-[PA/BT]	24 VDC	positive (closed)	spring return to 0	2,20
HK DG4V3 6C VM U 110AC	4/3	6C	[PB/AT]-[ABT/P]-[PA/BT]	110 VAC	positive (closed)	spring return to 0	2,20
HK DG4V3 6C VM U 230AC	4/3	6C	[PB/AT]-[ABT/P]-[PA/BT]	230 VAC 50 Hz	positive (closed)	spring return to 0	2,20
HK DG4V3 7C VM U 12DC	4/3	7C	[PB/AT]-[PAB/T]-[PA/BT]	12 VDC	positive (closed)	spring return to 0	2,20
HK DG4V3 7C VM U 24DC	4/3	7C	[PB/AT]-[PAB/T]-[PA/BT]	24 VDC	positive (closed)	spring return to 0	2,20
HK DG4V3 7C VM U 110AC	4/3	7C	[PB/AT]-[PAB/T]-[PA/BT]	110 VAC	positive (closed)	spring return to 0	2,20
HK DG4V3 7C VM U 230AC	4/3	7C	[PB/AT]-[PAB/T]-[PA/BT]	230 VAC 50 Hz	positive (closed)	spring return to 0	2,20
HK DG4V3 8C VM U 12DC	4/3	8C	[PA/BT]-[A/B/PT]-[PB/AT]	12 VDC	negative (open)	spring return to 0	2,20
HK DG4V3 8C VMU 24DC	4/3	8C	[PA/BT]-[A/B/PT]-[PB/AT]	24 VDC	negative (open)	spring return to 0	2,20
HK DG4V3 8C VM U 110AC	4/3	8C	[PA/BT]-[A/B/PT]-[PB/AT]	110 VAC	negative (open)	spring return to 0	2,20
HK DG4V3 8C VM U 230AC	4/3	8C	[PA/BT]-[A/B/PT]-[PB/AT]	230 VAC 50 Hz	negative (open)	spring return to 0	2,20
HK DG4V3 2N VM U 12DC	4/2	2N	[PB/AT]-[PA/BT]	12 VDC	positive (closed)	2 latching positions	1,60
HK DG4V3 2N VM U 24DC	4/2	2N	[PB/AT]-[PA/BT]	24 VDC	positive (closed)	2 latching positions	1,60
HK DG4V3 2N VM U 110AC	4/2	2N	[PB/AT]-[PA/BT]	110 VAC	positive (closed)	2 latching positions	1,60
HK DG4V3 2N VM U 230AC	4/2	2N	[PB/AT]-[PA/BT]	230 VAC 50 Hz	positive (closed)	2 latching positions	1,60

Piston type example: [A/B/PT] = [A blocked / B blocked / P+T connected]

Accessories

HK SP DG4V3	Coil for HK DG4V3 solenoid-operated valve
HK SP DIN 43650	Electrical plug for solenoid coil DIN 43650 / ISO 4400
HK M HK DH	Screw set for NG 6 valves type HK DH / DG4V3