

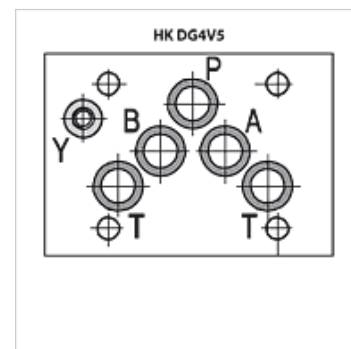
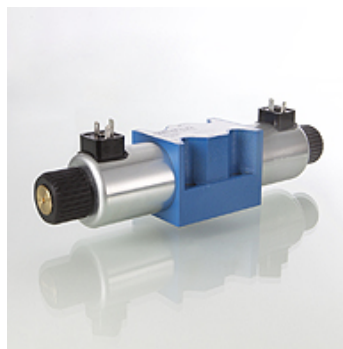
# HK DG4V5

Solenoid-operated directional control valve NG10

**HANSA FLEX**

## Properties

<b>Design</b>	4/2-way valve or 4/3-way valve with manual emergency operation
<b>Scope of supply</b>	with coil, without plug
<b>Operating pressure</b>	P, A, B: max. 315bar / T: max. 160bar (VDC) / T: max. 120bar (VAC)
<b>Volumetric flow</b>	max. 120 l/min (note characteristic curves)
<b>Connection</b>	ISO/Cetop 05 size 10
<b>Mounting</b>	4 pcs. socket head screw M6x40 12.9
<b>protection class</b>	IP 65



## Description

switching capacity limits see characteristic curves

## Ordering information

Further circuits and versions, volumetric flows and switching power limits on request

Item	Identification	Type	Piston type	Rated voltage/ current type	Overlap	Design	Weight (kg)
HK DG4V5 0BJ VM U 12DC	4/2	0BJ	[PB/AT]-[ABPT]	12 VDC	negative (open)	Spring return	3,60
HK DG4V5 0BJ VM U 24DC	4/2	0BJ	[PB/AT]-[ABPT]	24 VDC	negative (open)	Spring return	3,60
HK DG4V5 0B VM U 110AC	4/2	0B	[PB/AT]-[ABPT]	110 VAC	negative (open)	Spring return	3,60
HK DG4V5 0B VM U 230AC	4/2	0B	[PB/AT]-[ABPT]	230 VAC 50 Hz	negative (open)	Spring return	3,60
HK DG4V5 2AJ VM U 12DC	4/2	2AJ	[PB/AT]-[PA/BT]	12 VDC	positive (closed)	Spring return	3,60
HK DG4V5 2AJ VM U 24DC	4/2	2AJ	[PB/AT]-[PA/BT]	24 VDC	positive (closed)	Spring return	3,60
HK DG4V5 2A VM U 110AC	4/2	2A	[PB/AT]-[PA/BT]	110 VAC	positive (closed)	Spring return	3,60
HK DG4V5 2A VM U 230AC	4/2	2A	[PB/AT]-[PA/BT]	230 VAC 50 Hz	positive (closed)	Spring return	3,60
HK DG4V5 2ALJ VM U 12DC	4/2	2ALJ	[PB/AT]-[PA/BT]	12 VDC	positive (closed)	Spring return	3,60
HK DG4V5 2ALJ VM U 24DC	4/2	2ALJ	[PB/AT]-[PA/BT]	24 VDC	positive (closed)	Spring return	3,60
HK DG4V5 2AL VM U 110AC	4/2	2AL	[PB/AT]-[PA/BT]	110 VAC	positive (closed)	Spring return	3,60
HK DG4V5 2AL VM U 230AC	4/2	2AL	[PB/AT]-[PA/BT]	230 VAC 50 Hz	positive (closed)	Spring return	3,60
HK DG4V5 2BJ VM U 12DC	4/2	2BJ	[PB/AT]-[A/B/P/T]	12 VDC	positive (closed)	Spring return	3,60
HK DG4V5 2BJ VM U 24DC	4/2	2BJ	[PB/AT]-[A/B/P/T]	24 VDC	positive (closed)	Spring return	3,60
HK DG4V5 2B VM U 110AC	4/2	2B	[PB/AT]-[A/B/P/T]	110 VAC	positive (closed)	Spring return	3,60
HK DG4V5 2B VM U 230AC	4/2	2B	[PB/AT]-[A/B/P/T]	230 VAC 50 Hz	positive (closed)	Spring return	3,60
HK DG4V5 6BJ VM U 12DC	4/2	6BJ	[PB/AT]-[ABT/P]	12 VDC	positive (closed)	Spring return	3,60
HK DG4V5 6BJ VM U 24DC	4/2	6BJ	[PB/AT]-[ABT/P]	24 VDC	positive (closed)	Spring return	3,60
HK DG4V5 6B VM U 110AC	4/2	6B	[PB/AT]-[ABT/P]	110 VAC	positive (closed)	Spring return	3,60
HK DG4V5 6B VM U 230AC	4/2	6B	[PB/AT]-[ABT/P]	230 VAC 50 Hz	positive (closed)	Spring return	3,60
HK DG4V5 22AJ VM U 12DC	4/2	22AJ	[PB/A/T]-[PA/B/T]	12 VDC	positive (closed)	Spring return	3,60
HK DG4V5 22AJ VM U 24DC	4/2	22AJ	[PB/A/T]-[PA/B/T]	24 VDC	positive (closed)	Spring return	3,60
HK DG4V5 22A VM U 110AC	4/2	22A	[PB/A/T]-[PA/B/T]	110 VAC	positive (closed)	Spring return	3,60
HK DG4V5 22A VM U 230AC	4/2	22A	[PB/A/T]-[PA/B/T]	230 VAC 50 Hz	positive (closed)	Spring return	3,60
HK DG4V5 0CJ VM U 12DC	4/3	0CJ	[PB/AT]-[ABPT]-[PA/BT]	12 VDC	negative (open)	spring return to 0	4,30
HK DG4V5 0CJ VM U 24DC	4/3	0CJ	[PB/AT]-[ABPT]-[PA/BT]	24 VDC	negative (open)	spring return to 0	4,30
HK DG4V5 0C VM U 110AC	4/3	0C	[PB/AT]-[ABPT]-[PA/BT]	110 VAC	negative (open)	spring return to 0	4,30
HK DG4V5 0C VM U 230AC	4/3	0C	[PB/AT]-[ABPT]-[PA/BT]	230 VAC 50 Hz	negative (open)	spring return to 0	4,30
HK DG4V5 2CJ VM U 12DC	4/3	2CJ	[PB/AT]-[A/B/P/T]-[PA/BT]	12 VDC	positive (closed)	spring return to 0	4,30
HK DG4V5 2CJ VM U 24DC	4/3	2CJ	[PB/AT]-[A/B/P/T]-[PA/BT]	24 VDC	positive (closed)	spring return to 0	4,30
HK DG4V5 2C VM U 110AC	4/3	2C	[PB/AT]-[A/B/P/T]-[PA/BT]	110 VAC	positive (closed)	spring return to 0	4,30
HK DG4V5 2C VM U 230AC	4/3	2C	[PB/AT]-[A/B/P/T]-[PA/BT]	230 VAC 50 Hz	positive (closed)	spring return to 0	4,30
HK DG4V5 6CJ VM U 12DC	4/3	6CJ	[PB/AT]-[ABT/P]-[PA/BT]	12 VDC	positive (closed)	spring return to 0	4,30
HK DG4V5 6CJ VM U 24DC	4/3	6CJ	[PB/AT]-[ABT/P]-[PA/BT]	24 VDC	positive (closed)	spring return to 0	4,30
HK DG4V5 6C VM U 110AC	4/3	6C	[PB/AT]-[ABT/P]-[PA/BT]	110 VAC	positive (closed)	spring return to 0	4,30
HK DG4V5 6C VM U 230AC	4/3	6C	[PB/AT]-[ABT/P]-[PA/BT]	230 VAC 50 Hz	positive (closed)	spring return to 0	4,30
HK DG4V5 8CJ VM U 12DC	4/3	8CJ	[PA/BT]-[A/B/P/T]-[PB/AT]	12 VDC	negative (open)	spring return to 0	4,30
HK DG4V5 8CJ VM U 24DC	4/3	8CJ	[PA/BT]-[A/B/P/T]-[PB/AT]	24 VDC	negative (open)	spring return to 0	4,30
HK DG4V5 8CJ VM U 110AC	4/3	8CJ	[PA/BT]-[A/B/P/T]-[PB/AT]	110 VAC	negative (open)	spring return to 0	4,30
HK DG4V5 8CJ VM U 230AC	4/3	8CJ	[PA/BT]-[A/B/P/T]-[PB/AT]	230 VAC 50 Hz	negative (open)	spring return to 0	4,30
HK DG4V5 2NJ VM U 12DC	4/3	2NJ	[PB/AT]-[PA/BT]	12 VDC	positive (closed)	2 latching positions	4,30



# HK DG4V5

Solenoid-operated directional control valve NG10



Item							
Identification	Type	Piston type		Rated voltage/ current type	Overlap	Design	Weight (kg)
HK DG4V5 2NJ VM U 24DC	4/3	2NJ	[PB/AT]-[PA/BT]	24 VDC	positive (closed)	2 latching positions	4,30
HK DG4V5 2N VM U 110AC	4/3	2N	[PB/AT]-[PA/BT]	110 VAC	positive (closed)	2 latching positions	4,30
HK DG4V5 2N VM U 230AC	4/3	2N	[PB/AT]-[PA/BT]	230 VAC 50 Hz	positive (closed)	2 latching positions	4,30

Piston type example: [A/B/PT] = [A blocked / B blocked / P+T connected]

## Accessories

HK SP DG4V5	Coil for HK DG4V5 solenoid-operated valve
HK SP DIN 43650	Electrical plug for solenoid coil DIN 43650 / ISO 4400
HK M HK DK	Set of bolts for NG 10 valves types HK DK11/DKE/DG4V5