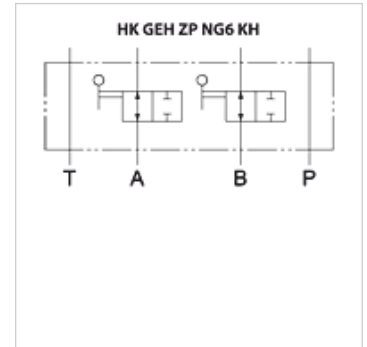


HK GEH ZP NG6 KH

Valve housing ZP NG6 with ball valve

Properties

| | |
|---------------------------|--|
| Design | Sandwich body valve Ball valve in A+B |
| Scope of supply | incl. 1x hand lever for ball valve |
| Operating pressure | max. 315 bar |
| Volumetric flow | max. 80 l/min |
| Connection | ISO/Cetop 03 size 6 |



Description

Sandwich body valve with shut-off ball valves for constructing sandwich arrangements with ISO/Cetop 03 NG6 valves

This sandwich plate allows all the components above it to be shut off – with no pressure relief or emptying and without adversely affecting the rest of the circuit.

Ordering information

Other designs available on request

Additional information

Because of their high number of control components, large plants are susceptible to malfunctions. If, for example, a solenoid valve fails in the main hydraulic system of a steel rolling mill, this control component must be operated manually or production interrupted until the valve is replaced.

To do this, the system must be depressurised, the cylinder, which may be under external pressure, intercepted and the oil drained from the risers to the cylinder. Then, after replacing the solenoid valve, the pipes are refilled and bled.

By the use of this sandwich plate with a ball valve, the directional control valve attached to the plate can be replaced after shutting off all the channels. This is done without depressurising and without draining the system and the associated contamination, without bleeding and without having to take other controls into consideration. This considerably reduces the downtime for hydraulic systems. Starting up the system to bring it into first use is much easier, because it does not have to be drained to replace flushing plates with directional control valves. Furthermore, this can also be done without having to fix any connected cylinders that are under external pressure for the period of servicing. Because the CETOP mounting diagrams on both sides of the connection for the solenoid-operated directional control valves are identical, the sandwich plates can be retrofitted without any problem.

Item

| Identification | acts in channel | Plate height (mm) | Weight (kg) |
|-----------------|-----------------|----------------------|----------------|
| HK ZP NG6 KH AB | A + B | 68 | 1,5 |