

# HK 055 283

Check valve SC, single-acting with venting

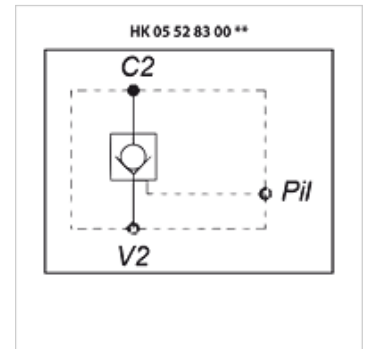
**HANSA FLEX**

## Properties

**Design** Cone locking  
pilot-controlled - single-acting  
Seat version - leak-free  
vented control range

**Material** Housing: Aluminium  
Inside parts of steel

**Operating pressure** max. 350 bar



## Item

Identification	Thread	Opening pressure (bar)	Level control ratio	Q max. (L/min)	Weight (kg)
HK 055 283 000 200	G 3/8"	1,0	1:10	30	0,62
HK 055 283 000 201	G 3/8"	4,5	1:10	30	0,62