

# SK ZUB AH HA

Welded-on clip for HA coupling

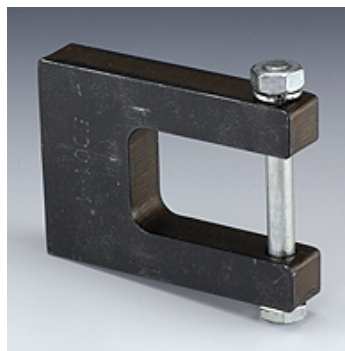
**HANSA FLEX**

## Properties

**Scope of supply** Retainer with screw and nut

**suitable for** Screw coupling loose half SKL...HA  
Screw coupling fixed half SKF...HA

**Material** Steel



## Item

Identification	DN*	Size	for coupling thread
SK ZUB AH 10 HA	10	3/8"	Rd. 36 x 3
SK ZUB AH 13 HA	12	1/2"	Rd. 40 x 3
SK ZUB AH 20 HA	19	3/4"	Rd. 45 x 3
SK ZUB AH 25 HA	25	1"	Rd. 58 x 4
SK ZUB AH 32 HA	31	1.1/4"	Rd. 65 x 5
SK ZUB AH 40 HA	38	1.1/2"	Rd. 75 x 5

DN = Nominal diameter, nominal width

## Accessory for following products

SKL IR HA Screwed coupling, loose half

SKF IR HA Screwed coupling fixed half