

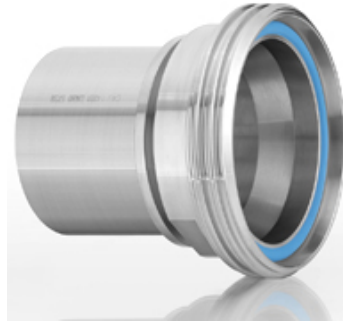
# TUEG LMH VA

Dairy coupling male thread, with smooth tail, stainless steel

**HANSA FLEX**

## Properties

<b>Application</b>	Food industry
<b>Connection 1</b>	Thread socket form SC with Rd external thread
<b>Sealing form 1</b>	conical seat with O-ring
<b>Standard</b>	DIN 11851 DIN 405-1
<b>Construction</b>	straight
<b>Material</b>	Stainless steel 1.4301



## Item

Identification	DN	PN (bar)	G1
TUEG 25 LMH VA	25	40	Rd 52 x 1/6"
TUEG 32 LMH VA	32	40	Rd 58 x 1/6"
TUEG 38 LMH VA	38	40	Rd 65 x 1/6"
TUEG 50 LMH VA	50	25	Rd 78 x 1/6"
TUEG 63 LMH VA	63	25	Rd 95 x 1/6"
TUEG 75 LMH VA	76	25	Rd 110 x 1/4"
TUEG 100 LMH VA	100	25	Rd 130 x 1/4"

## Accessories

<b>KS AL</b>	Clamp ring fitting, aluminium
<b>KS FIX AL</b>	Clamping shell for pinning, aluminium

## Spare parts

<b>LM-DI PT</b>	PTFE gasket for use with foodstuffs
-----------------	-------------------------------------