

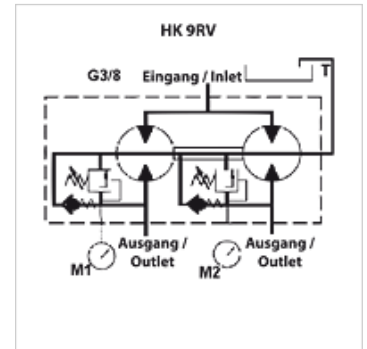
Properties

Design with one phase compensation valve and anti-cavitation valve per section
external leak oil discharge
Adjustment range DBV: 70-210 bar

Rotational speed range 1200 - 2700 U/min

Pressure difference max. 30 bar (between the sections)

Recommended speed 1800 - 2000 rpm



Note

Before commissioning the system, the first running-in of the gear flow divider should be under no load.

Description

This flow divider is used to supply two independent hydraulic circuits with just one pump

Division error approx. 3%

Equal pressure setting for all sections

Valves settable from 70-210 bar, other setting ranges on request

Modification to internal leak oil discharge possible - For this, remove the cylinder head screw in port T and close off the port with G1/2" blind plug (modification recommended only after consultation!)

Configuration of gear flow dividers: $q_i = Q/z * 1000/n$

q_i = displacement/section [cm³]; Q = total intake volumetric flow [l/min]; z = no. of sections; n = rotating speed [rpm]

Item

Identification	Intake volume per section (cc)	p1 max. (bar)	Flow per element min. (L/min)	Flow per element max. (L/min)	Flow per element (L/min)	A (mm)	B (mm)	C (mm)	D (mm)	E (mm)	F (mm)	F1 (mm)	H (mm)	Li (mm)	Ø R1 (mm)	Weight (kg)
HK 9RV 02C 01	0,17	210	0,20	1,20	0,40	29,3	187,6	46	32,5	54,25	88,3	123,3	50	174	6,5	2,1
HK 9RV 02C 02	0,25	210	0,30	1,80	0,70	29,9	188,8	46	32,5	54,25	88,3	123,3	50	175	6,5	2,1
HK 9RV 02C 04	0,45	210	0,60	3,00	1,20	31,5	192,0	46	32,5	54,25	88,3	123,3	50	178	6,5	2,1
HK 9RV 02C 05	0,57	210	0,80	3,80	1,50	32,5	194,0	46	32,5	54,25	88,3	123,3	50	180	6,5	2,2
HK 9RV 02C 06	0,76	210	1,00	4,80	2,00	34,0	197,0	46	32,5	54,25	88,3	123,3	50	183	6,5	2,2

p1 = max. working pressure