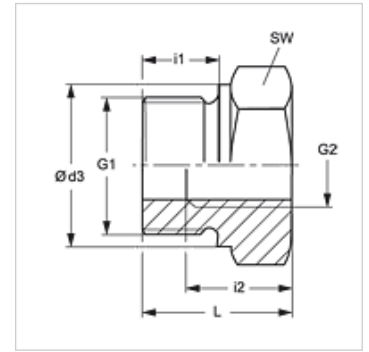


### Características

|                              |                                   |
|------------------------------|-----------------------------------|
| <b>Conexión 1</b>            | Roscas exteriores BSP cilíndricas |
| <b>Forma de obturación 1</b> | Forma B                           |
| <b>Conexión 2</b>            | Rosca interior BSP cilíndricas    |
| <b>Construcción</b>          | Reductor intercambiable           |
| <b>Forma constructiva</b>    | corta                             |
| <b>Material</b>              | Latón                             |



### Nota

Para obtener información acerca del montaje, la instalación, la carga de presión y las temperaturas de servicio admisibles, consulte la Información técnica de los racores de tubo.

### Artículo

| Denominación    | Presión de servicio en bar | G1           | G2         | Ø d3<br>(mm) | i1<br>(mm) | i2<br>(mm) | L<br>(mm) | SW<br>(mm) |
|-----------------|----------------------------|--------------|------------|--------------|------------|------------|-----------|------------|
| RIK NW 10 03 MG | PN 250                     | G 3/8" -19   | G 1/8" -28 | 22           | 12         | 8          | 22,5      | 22         |
| RIK NW 13 03 MG | PN 250                     | G 1/2" -14   | G 1/8" -28 | 26           | 14         | 8          | 24,0      | 27         |
| RIK NW 13 06 MG | PN 200                     | G 1/2" -14   | G 1/4" -19 | 26           | 14         | 12         | 24,0      | 27         |
| RIK NW 20 06 MG | PN 200                     | G 3/4" -14   | G 1/4" -19 | 32           | 16         | 12         | 26,0      | 32         |
| RIK NW 20 10 MG | PN 200                     | G 3/4" -14   | G 3/8" -19 | 32           | 16         | 12         | 26,0      | 32         |
| RIK NW 25 10 MG | PN 200                     | G 1" -11     | G 3/8" -19 | 39           | 18         | 12         | 29,0      | 41         |
| RIK NW 25 13 MG | PN 200                     | G 1" -11     | G 1/2" -14 | 39           | 18         | 14         | 29,0      | 41         |
| RIK NW 32 13 MG | PN 100                     | G 1.1/4" -11 | G 1/2" -14 | 49           | 20         | 14         | 32,0      | 50         |
| RIK NW 32 20 MG | PN 100                     | G 1.1/4" -11 | G 3/4" -14 | 49           | 20         | 16         | 32,0      | 60         |
| RIK NW 40 13 MG | PN 100                     | G 1.1/2" -11 | G 1/2" -14 | 55           | 22         | 14         | 36,0      | 55         |
| RIK NW 40 20 MG | PN 100                     | G 1.1/2" -11 | G 3/4" -14 | 55           | 22         | 16         | 36,0      | 55         |
| RIK NW 40 25 MG | PN 100                     | G 1.1/2" -11 | G 1" -11   | 55           | 22         | 18         | 36,0      | 55         |

PN = presión nominal PB = presión de servicio máx.

### Variantes de producto

|        |  |
|--------|--|
| RIK    | Reductor intercambiable, corto, Acero      |
| RIK VA | Reductor intercambiable, corto, Acero fino |