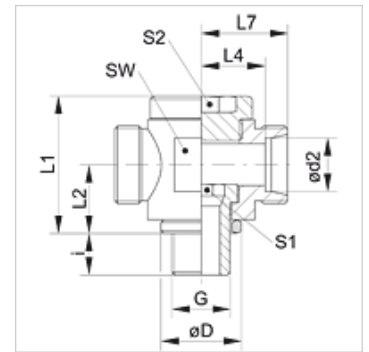


### Características

|                             |   |
|-----------------------------|---|
| Conexión 1                  | Roscas exteriores BSP cilíndricas                   |
| Forma de obturación 1       | Junta de estanqueidad                               |
| Conexión 2 + 3              | Rosca exterior métrica, cilíndrica                  |
| Forma de obturación 2 + 3   | Cono interior de 24°                                |
| Construcción                | Racor giratorio sin estrangulación                  |
| Forma constructiva          | en T  |
| Norma                       | ISO 8434-1  |
| Volumen de suministro       | Tubuladura (sin tuerca de racor ni anillo cortante) |
| Material                    | Acero   |
| Protección de la superficie | con revestimiento galvanizado                       |



### Nota

Para obtener información acerca del montaje, la instalación, la carga de presión y las temperaturas de servicio admisibles, consulte la Información técnica de los racores de tubo.

### Artículo

| Denominación  | Serie | Presión de servicio en bar | Ø d2 (mm) | G            | Ø D (mm) | i (mm) | L1 (mm) | L2 (mm) | L4 (mm) | L7 (mm) | SW (mm) | S1 | S2 |
|---------------|-------|----------------------------|-----------|--------------|----------|--------|---------|---------|---------|---------|---------|----|----|
| XDTR NW 04 HL | L     | PN 160                     | 6         | G 1/8" -28   | 14,0     | 8      | 24      | 12      | 12,0    | 19      | 19      | 6  | 6  |
| XDTR NW 06 HL | L     | PN 160                     | 8         | G 1/4" -19   | 18,0     | 12     | 30      | 15      | 14,0    | 21      | 22      | 8  | 8  |
| XDTR NW 08 HL | L     | PN 100                     | 10        | G 1/4" -19   | 18,0     | 12     | 30      | 15      | 15,0    | 22      | 22      | 8  | 8  |
| XDTR NW 10 HL | L     | PN 100                     | 12        | G 3/8" -19   | 22,0     | 12     | 36      | 18      | 17,5    | 24      | 27      | 10 | 10 |
| XDTR NW 13 HL | L     | PN 100                     | 15        | G 1/2" -14   | 26,0     | 14     | 40      | 20      | 20,0    | 27      | 30      | 12 | 12 |
| XDTR NW 16 HL | L     | PN 100                     | 18        | G 1/2" -14   | 26,0     | 14     | 40      | 20      | 19,5    | 27      | 30      | 12 | 12 |
| XDTR NW 20 HL | L     | PN 100                     | 22        | G 3/4" -14   | 32,0     | 16     | 52      | 25      | 27,0    | 34      | 41      | 17 | 17 |
| XDTR NW 25 HL | L     | PN 100                     | 28        | G 1" -11     | 39,0     | 18     | 58      | 29      | 29,5    | 37      | 46      | 22 | 22 |
| XDTR NW 32 HL | L     | PN 63                      | 35        | G 1.1/4" -11 | 49,0     | 20     | 69      | 34      | 33,0    | 44      | 55      | 27 | 27 |
| XDTR NW 40 HL | L     | PN 63                      | 42        | G 1.1/2" -11 | 55,0     | 22     | 84      | 41      | 40,0    | 51      | 70      | 32 | 32 |
| XDTR NW 03 HS | S     | PN 160                     | 6         | G 1/4" -19   | 18,0     | 12     | 30      | 15      | 16,0    | 23      | 22      | 8  | 8  |
| XDTR NW 04 HS | S     | PN 160                     | 8         | G 1/4" -19   | 18,0     | 12     | 30      | 15      | 16,0    | 23      | 22      | 8  | 8  |
| XDTR NW 06 HS | S     | PN 100                     | 10        | G 3/8" -19   | 22,0     | 12     | 36      | 18      | 18,0    | 25      | 27      | 10 | 10 |
| XDTR NW 08 HS | S     | PN 100                     | 12        | G 3/8" -19   | 22,0     | 12     | 36      | 18      | 24,0    | 25      | 27      | 10 | 10 |
| XDTR NW 10 HS | S     | PN 100                     | 14        | G 1/2" -14   | 26,0     | 14     | 42      | 21      | 22,0    | 30      | 32      | 12 | 12 |
| XDTR NW 13 HS | S     | PN 100                     | 16        | G 1/2" -14   | 26,0     | 14     | 42      | 21      | 21,5    | 30      | 32      | 12 | 12 |
| XDTR NW 16 HS | S     | PN 100                     | 20        | G 3/4" -14   | 32,0     | 16     | 57      | 28      | 28,5    | 39      | 46      | 17 | 17 |
| XDTR NW 20 HS | S     | PN 100                     | 25        | G 1" -11     | 39,0     | 18     | 62      | 31      | 31,0    | 43      | 50      | 22 | 22 |
| XDTR NW 25 HS | S     | PN 63                      | 30        | G 1.1/4" -11 | 49,0     | 20     | 74      | 36      | 36,5    | 50      | 60      | 27 | 27 |
| XDTR NW 32 HS | S     | PN 63                      | 38        | G 1.1/2" -11 | 55,0     | 22     | 84      | 41      | 41,0    | 57      | 70      | 32 | 32 |

Serie: LL = muy ligero L = ligero S = pesado – PN = presión nominal PB = presión de servicio máx. – Ø d2 = diámetro exterior del tubo

### Variantes de producto

|         |   |
|---------|---|
| XDTR VA | Racor giratorio sin estrangulación, en T, Tubuladura (sin tuerca de racor ni anillo cortante) |
| DTR     | Racor giratorio sin estrangulación, en T, Tubuladura con tuerca de racor y anillo cortante    |