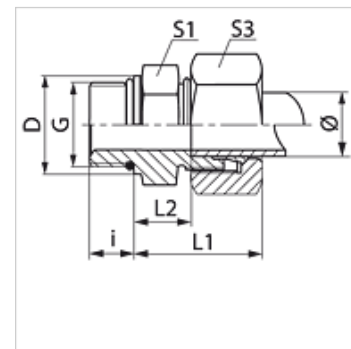


### Características

|                             |  |
|-----------------------------|--|
| Conexión 1                  | Rosca exterior métrica, cilíndrica               |
| Forma de obturación 1       | Forma F  |
| Conexión 2                  | Rosca exterior métrica, cilíndrica               |
| Forma de obturación 2       | Cono interior de 24°                             |
| Construcción                | Racor de rosca macho                             |
| Forma constructiva          | recto  |
| Norma                       | ISO 8434-1                                       |
| Volumen de suministro       | Tubuladura con tuerca de racor y anillo cortante |
| Material                    | Acero  |
| Protección de la superficie | con revestimiento galvanizado                    |



### Nota

Para obtener información acerca del montaje, la instalación, la carga de presión y las temperaturas de servicio admisibles, consulte la Información técnica de los racores de tubo.

### Artículo

| Denominación    | Serie | Presión de servicio en bar | Ø exterior tubo (mm) | G          | D (mm) | i (mm) | L1 (mm) | L2 (mm) | S1 | S3 | OR           |
|-----------------|-------|----------------------------|----------------------|------------|--------|--------|---------|---------|----|----|--------------|
| VMO 04 LL       | LL    | PN 100                     | 4                    | M 8 x 1    | 10,8   | 6,5    | 19,0    | 9,5     | 11 | 10 | 6,1 x 1,6    |
| VMO 04 LL 10    | LL    | PN 100                     | 4                    | M 10 x 1   | 12,8   | 6,5    | 19,0    | 9,5     | 13 | 10 | 8,0 x 1,5    |
| VMO 06 LL       | LL    | PN 100                     | 6                    | M 10 x 1   | 12,8   | 6,5    | 19,5    | 8,0     | 13 | 12 | 8,0 x 1,5    |
| VMO NW 04 HL    | L     | PN 250                     | 6                    | M 10 x 1   | 14,0   | 8,0    | 23,0    | 8,5     | 14 | 14 | 8,0 x 1,5    |
| VMO NW 06 HL    | L     | PN 250                     | 8                    | M 12 x 1,5 | 17,0   | 12,0   | 25,0    | 10,0    | 17 | 17 | 9,3 x 2,4    |
| VMO NW 08 HL    | L     | PN 250                     | 10                   | M 14 x 1,5 | 19,0   | 12,0   | 26,0    | 11,0    | 19 | 19 | 11,3 x 2,4   |
| VMO NW 10 HL    | L     | PN 250                     | 12                   | M 16 x 1,5 | 22,0   | 12,0   | 27,0    | 12,5    | 22 | 22 | 13,3 x 2,4   |
| VMO NW 13 HL    | L     | PN 250                     | 15                   | M 18 x 1,5 | 24,0   | 12,0   | 29,0    | 13,5    | 24 | 27 | 15,3 x 2,4   |
| VMO NW 16 HL    | L     | PN 160                     | 18                   | M 22 x 1,5 | 27,0   | 14,0   | 32,0    | 14,5    | 27 | 32 | 19,3 x 2,4   |
| VMO NW 20 HL    | L     | PN 160                     | 22                   | M 26 x 1,5 | 31,0   | 16,0   | 34,0    | 16,5    | 32 | 36 | 23,3 x 2,4   |
| VMO NW 20 HL 27 | L     | PN 160                     | 22                   | M 27 x 2   | 32,0   | 16,0   | 33,0    | 16,5    | 32 | 36 | 23,6 x 2,9   |
| VMO NW 25 HL    | L     | PN 100                     | 28                   | M 33 x 2   | 41,0   | 18,0   | 34,0    | 17,5    | 41 | 41 | 29,5 x 3,0   |
| VMO NW 32 HL    | L     | PN 100                     | 35                   | M 42 x 2   | 50,0   | 20,0   | 39,0    | 17,5    | 50 | 50 | 38,0 x 3,0   |
| VMO NW 40 HL    | L     | PN 160                     | 42                   | M 48 x 2   | 55,0   | 17,5   | 42,0    | 19,0    | 55 | 60 | 44,60 x 3,00 |
| VMO NW 03 HS    | S     | PN 630                     | 6                    | M 12 x 1,5 | 17,0   | 12,0   | 28,0    | 13,0    | 17 | 17 | 9,3 x 2,4    |
| VMO NW 04 HS    | S     | PN 630                     | 8                    | M 14 x 1,5 | 19,0   | 12,0   | 30,0    | 15,0    | 19 | 19 | 11,3 x 2,4   |
| VMO NW 06 HS    | S     | PN 630                     | 10                   | M 16 x 1,5 | 22,0   | 12,0   | 31,0    | 15,0    | 22 | 22 | 13,3 x 2,4   |
| VMO NW 08 HS    | S     | PN 630                     | 12                   | M 18 x 1,5 | 24,0   | 12,0   | 33,0    | 17,0    | 24 | 24 | 15,3 x 2,4   |
| VMO NW 13 HS    | S     | PN 400                     | 16                   | M 22 x 1,5 | 27,0   | 14,0   | 37,0    | 18,5    | 27 | 30 | 19,3 x 2,4   |
| VMO NW 16 HS    | S     | PN 400                     | 20                   | M 27 x 2   | 32,0   | 16,0   | 41,0    | 20,5    | 32 | 36 | 23,5 x 3,0   |
| VMO NW 20 HS    | S     | PN 400                     | 25                   | M 33 x 2   | 41,0   | 18,0   | 47,0    | 23,0    | 41 | 46 | 29,5 x 3,0   |
| VMO NW 25 HS    | S     | PN 250                     | 30                   | M 42 x 2   | 50,0   | 20,0   | 50,0    | 23,5    | 50 | 50 | 38,0 x 3,0   |
| VMO NW 32 HS    | S     | PN 315                     | 38                   | M 48 x 2   | 55,0   | 21,5   | 57,0    | 26,0    | 55 | 60 | 44,6 x 2,9   |

Serie: LL = muy ligero L = ligero S = pesado - PN = presión nominal PB = presión de servicio máx. - Ø = diámetro exterior tubo

### Variantes de producto

XVMO