

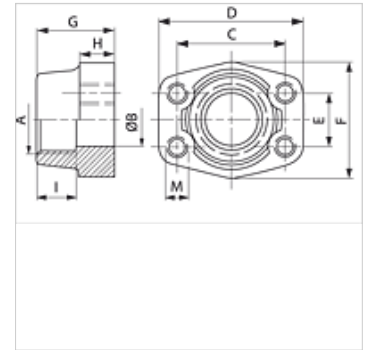
# GFS N U (3000 / 6000 PSI)

Contrabrida roscada macho SAE, NPT

**HANSA FLEX**

## Características

|                             |                                   |
|-----------------------------|-----------------------------------|
| Norma                       | SAE J 518 C<br>ISO 6162           |
| Forma constructiva          | recto                             |
| Construcción                | Contrabrida roscada SAE           |
| Fijación                    | Rosca interior para tornillos UNC |
| Volumen de suministro       | sólo brida                        |
| Material                    | S355J2G3 (ST52.3)                 |
| Protección de la superficie | negro lubricado                   |



## Nota

La presión de servicio máxima indicada se refiere a la brida. La presión de servicio efectiva la determina el espesor de pared y la calidad del tubo.

## Artículo

| Denominación      | Serie de presión | PB 10.9<br>(bar) | Tamaño constructivo | A                | Ø B<br>(mm) | C<br>(mm) | D<br>(mm) | E<br>(mm) | F<br>(mm) | G<br>(mm) | H<br>(mm) | I<br>(mm) | M onz |
|-------------------|------------------|------------------|---------------------|------------------|-------------|-----------|-----------|-----------|-----------|-----------|-----------|-----------|-------|
| GFS 80 N U        | 3000 PSI         | 350              | 1/2"                | NPT 1/2" -14     | 13          | 38,1      | 54        | 17,5      | 46        | 36        | 16        | 19        | 5/16" |
| GFS 80 N 3/8 U    | 3000 PSI         | 350              | 1/2"                | NPT 3/8" -18     | 13          | 38,1      | 54        | 17,5      | 46        | 36        | 16        | 19        | 5/16" |
| GFS 100 N U       | 3000 PSI         | 350              | 3/4"                | NPT 3/4" -14     | 19          | 47,6      | 65        | 22,2      | 50        | 36        | 18        | 19        | 3/8"  |
| GFS 100 N 1/2 U   | 3000 PSI         | 350              | 3/4"                | NPT 1/2" -14     | 13          | 47,6      | 65        | 22,2      | 50        | 36        | 18        | 19        | 3/8"  |
| GFS 102 N U       | 3000 PSI         | 315              | 1"                  | NPT 1" -11,5     | 25          | 52,4      | 70        | 26,2      | 55        | 38        | 18        | 22        | 3/8"  |
| GFS 102 N 3/4 U   | 3000 PSI         | 315              | 1"                  | NPT 3/4" -14     | 19          | 52,4      | 70        | 26,2      | 55        | 35        | 21        | 19        | 3/8"  |
| GFS 104 N U       | 3000 PSI         | 250              | 1.1/4"              | NPT 1.1/4" -11,5 | 32          | 58,7      | 79        | 30,2      | 68        | 41        | 21        | 22        | 7/16" |
| GFS 104 N 1 U     | 3000 PSI         | 250              | 1.1/4"              | NPT 1" -11,5     | 25          | 58,7      | 81        | 30,2      | 65        | 42        | 25        | 22        | 7/16" |
| GFS 106 N U       | 3000 PSI         | 200              | 1.1/2"              | NPT 1.1/2"       | 38          | 69,9      | 93        | 35,7      | 78        | 45        | 25        | 24        | 1/2"  |
| GFS 106 N 1 1/4 U | 3000 PSI         | 200              | 1.1/2"              | NPT 1.1/4" -11,5 | 32          | 69,9      | 95        | 35,7      | 78        | 45        | 27        | 24        | 1/2"  |
| GFS 108 N U       | 3000 PSI         | 200              | 2"                  | NPT 2" -11,5     | 51          | 77,8      | 102       | 42,9      | 90        | 45        | 25        | 30        | 1/2"  |
| GFS 108 N 1 1/2 U | 3000 PSI         | 200              | 2"                  | NPT 1.1/2"       | 38          | 77,8      | 102       | 42,9      | 90        | 45        | 25        | 26        | 1/2"  |
| GFS 110 N U       | 3000 PSI         | 160              | 2.1/2"              | NPT 2.1/2" -11,5 | 63          | 88,9      | 114       | 50,8      | 105       | 50        | 25        | 30        | 1/2"  |
| GFS 112 N U       | 3000 PSI         | 138              | 3"                  | NPT 3" -11,5     | 73          | 106,4     | 134       | 61,9      | 124       | 50        | 27        | 34        | 5/8"  |
| GFS 114 N U       | 3000 PSI         | 35               | 3.1/2"              | NPT 3.1/2" -11,5 | 89          | 120,7     | 152       | 69,9      | 136       | 48        | 27        | 34        | 5/8"  |
| GFS 116 N U       | 3000 PSI         | 35               | 4"                  | NPT 4" -11,5     | 99          | 130,2     | 162       | 77,8      | 146       | 48        | 27        | 34        | 5/8"  |
|                   |                  |                  |                     |                  |             |           |           |           |           |           |           |           |       |
| GFS 401 N U       | 6000 PSI         | 400              | 1/2"                | NPT 1/2" -14     | 13          | 40,5      | 54        | 18,2      | 46        | 36        | 16        | 19        | 5/16" |
| GFS 401 N 3/8 U   | 6000 PSI         | 400              | 1/2"                | NPT 3/8" -18     | 13          | 40,5      | 54        | 18,2      | 46        | 36        | 16        | 19        | 5/16" |
| GFS 402 N U       | 6000 PSI         | 400              | 3/4"                | NPT 3/4" -14     | 19          | 50,8      | 71        | 23,8      | 55        | 35        | 21        | 22        | 3/8"  |
| GFS 402 N 1/2 U   | 6000 PSI         | 400              | 3/4"                | NPT 1/2" -14     | 13          | 50,8      | 71        | 23,8      | 55        | 35        | 21        | 22        | 3/8"  |
| GFS 403 N U       | 6000 PSI         | 400              | 1"                  | NPT 1" -11,5     | 25          | 57,2      | 81        | 27,8      | 65        | 42        | 25        | 24        | 7/16" |
| GFS 403 N 3/4 U   | 6000 PSI         | 400              | 1"                  | NPT 3/4" -14     | 19          | 57,2      | 81        | 27,8      | 65        | 42        | 25        | 24        | 7/16" |
| GFS 404 N U       | 6000 PSI         | 400              | 1.1/4"              | NPT 1.1/4" -11,5 | 32          | 66,7      | 95        | 31,8      | 78        | 45        | 27        | 25        | 1/2"  |
| GFS 404 N 1 U     | 6000 PSI         | 400              | 1.1/4"              | NPT 1" -11,5     | 25          | 66,7      | 95        | 31,8      | 78        | 45        | 27        | 25        | 1/2"  |
| GFS 405 N U       | 6000 PSI         | 400              | 1.1/2"              | NPT 1.1/2"       | 38          | 79,4      | 112       | 36,5      | 94        | 50        | 30        | 28        | 5/8"  |
| GFS 405 N 1 1/4 U | 6000 PSI         | 400              | 1.1/2"              | NPT 1.1/4" -11,5 | 32          | 79,4      | 112       | 36,5      | 94        | 50        | 30        | 28        | 5/8"  |
| GFS 406 N U       | 6000 PSI         | 400              | 2"                  | NPT 2" -11,5     | 51          | 96,8      | 134       | 44,5      | 114       | 65        | 37        | 30        | 3/4"  |
| GFS 406 N 1 1/2 U | 6000 PSI         | 400              | 2"                  | NPT 1.1/2"       | 38          | 96,8      | 134       | 44,5      | 114       | 65        | 37        | 30        | 3/4"  |

PN = presión nominal PB = presión de servicio máx.

## Variantes de producto

GFS N M (3000 / 6000 PSI) Contrabrida roscada macho SAE, NPT, sólo brida