

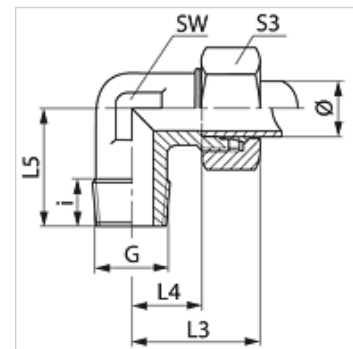
WRK MG

Racor de rosca macho; ángulo de 90°

HANSA FLEX

Características

| | |
|-----------------------|--|
| Conexión 1 | Roscas exteriores BSPT cónicas |
| Forma de obturación 1 | obturación de rosca |
| Conexión 2 | Rosca exterior métrica, cilíndrica |
| Forma de obturación 2 | Cono interior de 24° |
| Construcción | Racor de rosca macho |
| Forma constructiva | Ángulo de 90° |
| Norma | DIN 2353 ISO 8434-1 |
| Volumen de suministro | Tubuladura con tuerca de racor y anillo cortante |
| Material | Latón |



Nota

Para obtener información acerca del montaje, la instalación, la carga de presión y las temperaturas de servicio admisibles, consulte la Información técnica de los racores de tubo.

Artículo

| Denominación | Serie | Presión de servicio en bar | Ø exterior tubo (mm) | G | i (mm) | L3 (mm) | L4 (mm) | L5 (mm) | SW (mm) | S3 |
|--------------------|-------|----------------------------|----------------------|----------|--------|---------|---------|---------|---------|----|
| WR 04 LL MG | LL | PN 63 | 4 | R 1/8" K | 8 | 21 | 11,0 | 18 | 11 | 10 |
| WR 05 LL MG | LL | PN 63 | 5 | R 1/8" K | 8 | 22 | 10,0 | 17 | 11 | 12 |
| WR 06 LL MG | LL | PN 63 | 6 | R 1/8" K | 8 | 22 | 10,0 | 17 | 11 | 12 |
| WR 08 LL MG | LL | PN 63 | 8 | R 1/8" K | 8 | 23 | 11,5 | 20 | 12 | 14 |
| WR 10 LL MG | LL | PN 63 | 10 | R 1/4" K | 12 | 27 | 15,5 | 26 | 14 | 17 |
| WR 12 LL MG | LL | PN 63 | 12 | R 1/4" K | 12 | 27 | 15,0 | 27 | 17 | 19 |
| WR NW 04 HL MG | L | PN 200 | 6 | R 1/8" K | 8 | 27 | 12,0 | 20 | 12 | 14 |
| WR NW 04 HL 1/4 MG | L | PN 200 | 6 | R 1/4" K | 12 | 29 | 14,0 | 26 | 12 | 14 |
| WR NW 06 HL MG | L | PN 200 | 8 | R 1/4" K | 12 | 29 | 14,0 | 26 | 12 | 17 |
| WR NW 08 HL MG | L | PN 200 | 10 | R 1/4" K | 12 | 30 | 15,0 | 27 | 14 | 19 |
| WR NW 10 HL MG | L | PN 200 | 12 | R 3/8" K | 12 | 32 | 17,0 | 28 | 17 | 22 |
| WR NW 10 HL 1/4 MG | L | PN 200 | 12 | R 1/4" K | 12 | 32 | 17,0 | 28 | 17 | 22 |
| WR NW 10 HL 1/2 MG | L | PN 200 | 12 | R 1/2" K | 14 | 38 | 23,0 | 34 | 19 | 22 |
| WR NW 13 HL MG | L | PN 200 | 15 | R 1/2" K | 14 | 36 | 21,0 | 34 | 19 | 27 |
| WR NW 16 HL MG | L | PN 200 | 18 | R 1/2" K | 14 | 40 | 23,5 | 36 | 24 | 32 |
| WR NW 03 HS MG | S | PN 250 | 6 | R 1/4" K | 12 | 31 | 16,0 | 26 | 12 | 17 |
| WR NW 04 HS MG | S | PN 250 | 8 | R 1/4" K | 12 | 32 | 17,0 | 27 | 17 | 19 |
| WR NW 06 HS MG | S | PN 250 | 10 | R 3/8" K | 12 | 34 | 17,5 | 28 | 17 | 22 |
| WR NW 13 HS MG | S | PN 250 | 16 | R 1/2" K | 14 | 43 | 24,5 | 32 | 24 | 30 |

Serie: LL = muy ligero L = ligero S = pesado - PN = presión nominal PB = presión de servicio máx. - Ø = diámetro exterior tubo

Variantes de producto

| | |
|--------|---|
| WRK | Racor de rosca macho; ángulo de 90°, Acero |
| WRK VA | Racor de rosca macho; ángulo de 90°, Acero fino |