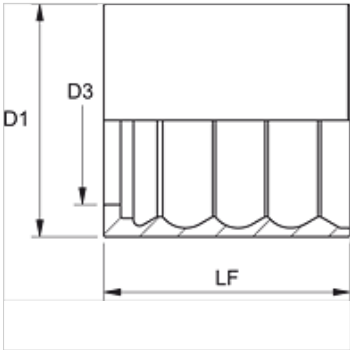
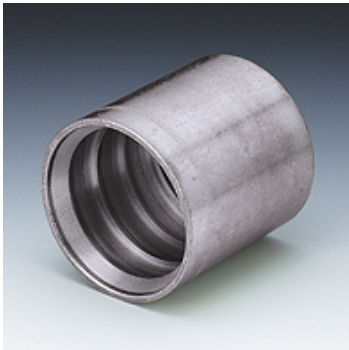


# PSGB 100

Engaste a presión, SGB 100



| Características             |                               |
|-----------------------------|-------------------------------|
| Clase de engaste            | Engaste sin pelar             |
| Material                    | Acero                         |
| Protección de la superficie | con revestimiento galvanizado |



| Artículo     |     |        |          |            |            |            |
|--------------|-----|--------|----------|------------|------------|------------|
| Denominación | DN* | Tamaño | Pulgadas | D1<br>(mm) | D3<br>(mm) | LF<br>(mm) |
| PSGB 120     | 19  | 12     | 3/4"     | 39,5       | 25,0       | 35,0       |
| PSGB 125     | 25  | 16     | 1"       | 46,0       | 32,7       | 44,0       |
| PSGB 132     | 31  | 20     | 1.1/4"   | 55,0       | 39,8       | 58,5       |
| PSGB 140     | 38  | 24     | 1.1/2"   | 65,0       | 45,8       | 63,0       |
| PSGB 150     | 51  | 32     | 2"       | 75,0       | 59,8       | 78,0       |
| PSGB 160     | 60  | 40     | 2.3/8"   | 85,0       | 67,1       | 79,0       |

DN = diámetro nominal, ancho nominal