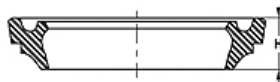
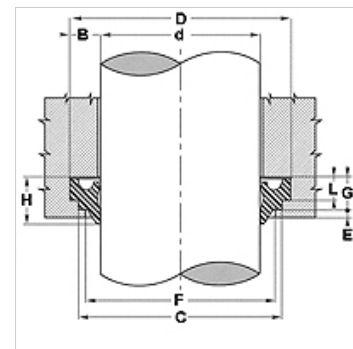


Características

| | |
|---------------------------------|--|
| Construcción | Extractor |
| Velocidad de deslizamiento max. | 0,5 m/s |
| Temperatura min. | -30 °C |
| Temperatura max. | 110 °C |
| Medios | Aceites minerales Emulsiones de agua |
| Montaje | Dar forma de riñón e introducir en la ranura de admisión |
| Aplicación | Hidráulica |
| Material | NBR |



| Toleranz / Tolerance | | | | | |
|----------------------|-----|------------|-----|-----|------------|
| d | D | L | C | F | G |
| h11 | H11 | +0,20 0 | H10 | H11 | +0,20 0 |



Descripción

montaje sencillo.

Artículo

| Denominación | D (mm) | d (mm) | L (mm) | C (mm) | F (mm) | G (mm) | E (mm) | H (mm) |
|--------------|-----------|-----------|-----------|-----------|-----------|-----------|-----------|-----------|
| DSR 10-U | 18 | 10 | 4,0 | 16 | 13,5 | 6,0 | 2 | 8 |
| DSR 12-U | 20 | 12 | 4,0 | 18 | 15,5 | 6,0 | 2 | 8 |
| DSR 14-U | 22 | 14 | 4,0 | 20 | 17,5 | 6,0 | 2 | 8 |
| DSR 15-U | 23 | 15 | 4,0 | 21 | 18,5 | 6,0 | 2 | 8 |
| DSR 16-U | 24 | 16 | 4,0 | 22 | 19,5 | 6,0 | 2 | 8 |
| DSR 18-U | 26 | 18 | 4,0 | 24 | 21,5 | 6,0 | 2 | 8 |
| DSR 20-U | 28 | 20 | 4,0 | 26 | 23,5 | 6,0 | 2 | 8 |
| DSR 22-U | 30 | 22 | 4,0 | 28 | 25,5 | 6,0 | 2 | 8 |
| DSR 24-U | 32 | 24 | 4,0 | 30 | 27,5 | 6,0 | 2 | 8 |
| DSR 25-U | 33 | 25 | 4,0 | 31 | 28,5 | 6,0 | 2 | 8 |
| DSR 28-U | 36 | 28 | 4,0 | 34 | 31,5 | 6,0 | 2 | 8 |
| DSR 30-U | 38 | 30 | 4,0 | 36 | 33,5 | 6,0 | 2 | 8 |
| DSR 32-U | 40 | 32 | 4,0 | 38 | 35,5 | 6,0 | 2 | 8 |
| DSR 35-U | 43 | 35 | 4,0 | 41 | 38,5 | 6,0 | 2 | 8 |
| DSR 36-U | 44 | 36 | 4,0 | 42 | 39,5 | 6,0 | 2 | 8 |
| DSR 37-U | 45 | 37 | 4,0 | 43 | 40,5 | 6,0 | 2 | 8 |
| DSR 38-U | 46 | 38 | 4,0 | 44 | 41,5 | 6,0 | 2 | 8 |
| DSR 40-U | 48 | 40 | 4,0 | 46 | 43,5 | 6,0 | 2 | 8 |
| DSR 42-U | 50 | 42 | 4,0 | 48 | 45,5 | 6,0 | 2 | 8 |
| DSR 45-U | 53 | 45 | 4,0 | 51 | 48,5 | 6,0 | 2 | 8 |
| DSR 46-U | 54 | 46 | 4,0 | 52 | 49,5 | 6,0 | 2 | 8 |
| DSR 48-U | 56 | 48 | 4,0 | 54 | 51,5 | 6,0 | 2 | 8 |
| DSR 50-U | 58 | 50 | 4,0 | 56 | 53,5 | 6,0 | 2 | 8 |
| DSR 55-U | 63 | 55 | 4,0 | 61 | 58,5 | 6,0 | 2 | 8 |
| DSR 56-U | 64 | 56 | 4,0 | 62 | 59,5 | 6,0 | 2 | 8 |
| DSR 60-U | 68 | 60 | 4,0 | 66 | 63,5 | 6,0 | 2 | 8 |
| DSR 63-U | 71 | 63 | 4,0 | 69 | 66,5 | 6,0 | 2 | 8 |
| DSR 65-U | 73 | 65 | 4,0 | 71 | 68,5 | 6,0 | 2 | 8 |
| DSR 70-U | 78 | 70 | 4,0 | 76 | 73,5 | 6,0 | 2 | 8 |
| DSR 75-U | 83 | 75 | 4,0 | 81 | 78,5 | 6,0 | 2 | 8 |
| DSR 80-U | 88 | 80 | 4,0 | 86 | 83,5 | 6,0 | 2 | 8 |
| DSR 85-U | 93 | 85 | 4,0 | 91 | 88,5 | 6,0 | 2 | 8 |
| DSR 90-U | 98 | 90 | 4,0 | 96 | 93,5 | 6,0 | 2 | 8 |
| DSR 100-U | 108 | 100 | 4,0 | 106 | 103,5 | 6,0 | 2 | 8 |
| DSR 110-U | 122 | 110 | 5,5 | 119 | 115,0 | 8,2 | 3 | 11 |
| DSR 125-U | 137 | 125 | 5,5 | 134 | 130,0 | 8,2 | 3 | 11 |
| DSR 130-U | 142 | 130 | 5,5 | 139 | 135,0 | 8,2 | 3 | 11 |
| DSR 140-U | 152 | 140 | 5,5 | 149 | 145,0 | 8,2 | 3 | 11 |
| DSR 145-U | 157 | 145 | 5,5 | 154 | 150,0 | 8,2 | 3 | 11 |
| DSR 150-U | 162 | 150 | 5,5 | 159 | 155,0 | 8,2 | 3 | 11 |
| DSR 160-U | 172 | 160 | 5,5 | 169 | 165,0 | 8,2 | 3 | 11 |
| DSR 200-U | 212 | 200 | 5,5 | 209 | 205,0 | 8,2 | 3 | 11 |
| DSR 220-U | 235 | 220 | 6,5 | 231 | 227,0 | 9,5 | 3 | 13 |
| DSR 360-U | 375 | 360 | 6,5 | 371 | 367,0 | 9,5 | 3 | 13 |