

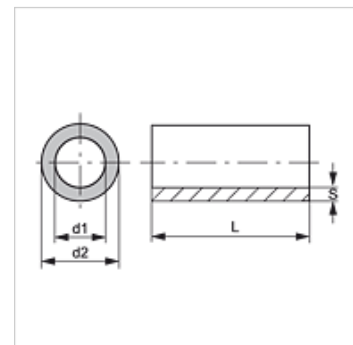
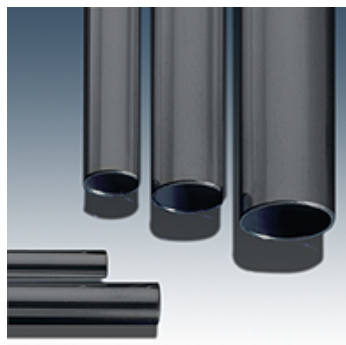
# PR ST52 (M)

Hydraulic tube, metric, ST52

## Características

**Construcción** Tubo de acero de precisión

**Material** Acero ST 52



## Artículo

| Denominación        | Ø d2<br>(mm) | Ø d1<br>(mm) | S<br>(mm) |
|---------------------|--------------|--------------|-----------|
| <b>PR 65-8 ST52</b> | 65,0         | 49,0         | 8,00      |
| <b>PR 60-7 ST52</b> | 60,0         | 56,0         | 7,00      |

L = longitud tubo aprox. 6 metros