

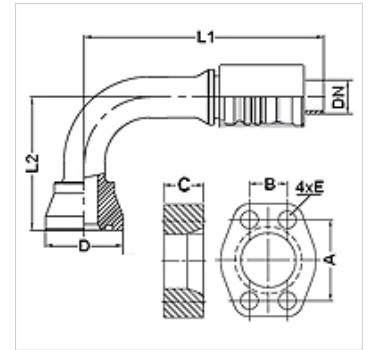
# PA 700 SK6 90 PLUS

Swage fitting, SK6 angle 90°

**HANSA FLEX**

## Características

|                                    |   |
|------------------------------------|---|
| <b>Campo de aplicación</b>         | Fijación a presión para tubos flexibles HD 700 PLUS |
| <b>Conexión 1</b>                  | Conexión de brida SAE 6000 PSI                      |
| <b>Forma de obturación 1</b>       | obturación plana con junta tórica SF                |
| <b>Integración</b>                 | con fijación contra el desgarre (Interlock)         |
| <b>Volumen de suministro</b>       | Racor a presión + engaste a presión                 |
| <b>Característica adicional</b>    | cone SAE fitting                                    |
| <b>Material</b>                    | Acero   |
| <b>Protección de la superficie</b> | con revestimiento galvanizado                       |



## Artículo

| Denominación              | DN | Tamaño | Pulgadas | Tamaño de brida | D (mm) | M metr.   | L1 (mm) | L2 (mm) | A (mm) | B (mm) | C (mm) | E (mm) |
|---------------------------|----|--------|----------|-----------------|--------|-----------|---------|---------|--------|--------|--------|--------|
| PA 720 SK6 90 PLUS        | 19 | 12     | 3/4"     | 3/4"            | 43,5   | M 10 x 45 | 134,8   | 75,0    | 50,8   | 23,8   | 25,0   | 11     |
| PA 725 SK6 90 PLUS        | 25 | 16     | 1"       | 1"              | 49,4   | M 12 x 50 | 155,0   | 90,0    | 57,2   | 27,8   | 27,0   | 13     |
| PA 725 SK6 32 90 PLUS     | 25 | 16     | 1"       | 1.1/4"          | 57,4   |           | 167,6   | 105,0   | 66,6   | 31,8   | 32,0   | 15     |
| PA 732 SK6 90 PLUS        | 31 | 20     | 1.1/4"   | 1.1/4"          | 57,4   |           | 185,0   | 120,0   | 66,6   | 31,8   | 32,0   | 15     |
| PA 732 SK6 90 L 160 PLUS  | 31 | 20     | 1.1/4"   | 1.1/4"          | 57,4   |           | 185,0   | 160,0   | 66,6   | 31,8   | 32,0   | 15     |
| PA 732 SK6 40 90 PLUS     | 31 | 20     | 1.1/4"   | 1.1/2"          | 68,4   |           | 213,1   | 125,9   | 79,3   | 36,5   | 40,0   | 17     |
| PA 740 SK6 90 PLUS        | 38 | 24     | 1.1/2"   | 1.1/2"          | 68,4   |           | 234,0   | 140,0   | 79,3   | 36,5   | 40,0   | 17     |
| PA 740 SK6 90 L180 PLUS   | 38 | 24     | 1.1/2"   | 1.1/2"          | 68,4   |           | 234,0   | 180,0   | 79,3   | 36,5   | 40,0   | 17     |
| PA 740 SK6 90 L215 PLUS   | 38 | 24     | 1.1/2"   | 1.1/2"          | 68,4   |           | 234,0   | 215,0   | 79,3   | 36,5   | 40,0   | 17     |
| PA 740 SK6 50 90 PLUS     | 38 | 24     | 1.1/2"   | 2"              | 83,5   |           | 287,0   | 160,0   | 96,8   | 44,5   | 50,0   | 21     |
| PA 740 SK6 50 90 L 180 PL | 38 | 24     | 1.1/2"   | 2"              | 83,5   |           | 284,0   | 180,0   | 96,8   | 44,5   | 50,0   | 21     |
| PA 750 SK6 90 PLUS        | 51 | 32     | 2"       | 2"              | 83,5   |           | 272,9   | 180,0   | 96,8   | 44,5   | 50,0   | 21     |
| PA 750 SK6 90 L280 PLUS   | 51 | 32     | 2"       | 2"              | 83,5   |           | 217,6   | 280,0   | 96,8   | 44,5   | 50,0   | 21     |

## Accesorios

|                      |                                  |
|----------------------|----------------------------------|
| <b>FS</b>            | Obturación para bridas SAE e ISO |
| <b>SCHRAUBE M</b>    | Tornillo hexagonal interior      |
| <b>SCHRAUBE M VZ</b> | Tornillo hexagonal interior      |