

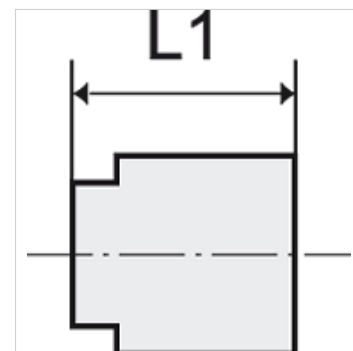
# K-VERSCHLUSSKAPPEN RUND

Hexagonal caps, round

**HANSA FLEX**

## Características

Presión de funcionamiento	Max. 20 bar
Rosca interior	Parallel to DIN EN ISO 228-1
Material	Stainless steel 1.4408



## Nota

The dimensions of the standard screw fittings may change slightly during the life of the catalogue as a result of optimisation processes.  
Otras especificaciones a petición.

## Artículo

Denominación	Rosca	L1 (mm)	Ø (mm)
K- 07 40 39 31	G 1/8	14,0	14,6
K- 07 40 39 32	G 1/4	15,4	17,0
K- 07 40 39 33	G 3/8	15,9	21,0
K- 07 40 39 34	G 1/2	20,0	28,0
K- 07 40 39 35	G 3/4	23,6	34,0
K- 07 40 39 36	G 1	28,0	40,0
K- 07 40 39 37	G 1 1/4	30,0	49,0
K- 07 40 39 38	G 1 1/2	31,2	55,0
K- 07 40 39 39	G 2	35,4	69,0