

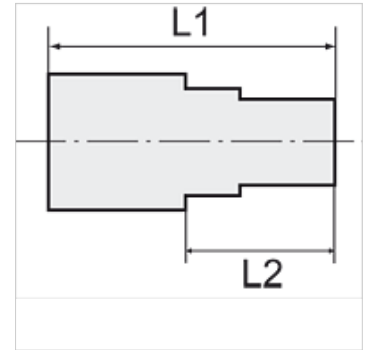
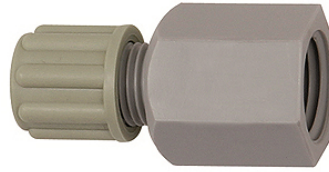
K-GAR IG

Female connectors with female G thread

HANSA FLEX

Características

Presión de servicio	Dependent on operating temperature; Max. 10 bar (at 20 °C); Max. 1 bar (at 60 °C)
Cuerpo del racor	Polyamide (PA)
Anillo de apriete	Polypropylene (PP)
Tuerca	Polypropylene (PP)



Nota

Otras especificaciones a petición.

Descripción

Manufactured from high impact-resistant, UV-stabilised engineering plastic, extremely resistant to weathering. Good chemical resistance to benzene, diesel oil, fuel oil and alkalis.
Not suitable for use with acids.

Artículo

Denominación	Rosca	para tubo flexible	L1 (mm)	L2 (mm)	SW
K- 07 40 32 46	G 1/8	4 mm / 6 mm	31,0	17,0	14 mm
K- 07 40 32 47	G 1/8	6 mm / 8 mm	36,0	21,0	17 mm
K- 07 40 32 48	G 1/8	8 mm / 10 mm	39,0	24,0	19 mm
K- 07 40 32 49	G 1/8	9 mm / 12 mm	43,0	28,0	22 mm
K- 07 40 32 50	G 1/4	4 mm / 6 mm	36,0	17,0	17 mm
K- 07 40 32 51	G 1/4	6 mm / 8 mm	41,0	21,0	17 mm
K- 07 40 32 52	G 1/4	8 mm / 10 mm	44,0	24,0	19 mm
K- 07 40 32 53	G 1/4	9 mm / 12 mm	48,0	28,0	22 mm
K- 07 40 32 54	G 3/8	4 mm / 6 mm	36,0	17,0	22 mm
K- 07 40 32 55	G 3/8	6 mm / 8 mm	41,0	21,0	22 mm
K- 07 40 32 56	G 3/8	8 mm / 10 mm	44,0	24,0	22 mm
K- 07 40 32 57	G 3/8	9 mm / 12 mm	48,0	28,0	22 mm
K- 07 40 32 58	G 1/2	4 mm / 6 mm	38,0	17,0	27 mm
K- 07 40 32 59	G 1/2	6 mm / 8 mm	42,0	21,0	27 mm
K- 07 40 32 60	G 1/2	8 mm / 10 mm	44,0	24,0	27 mm
K- 07 40 32 61	G 1/2	9 mm / 12 mm	49,0	28,0	27 mm