

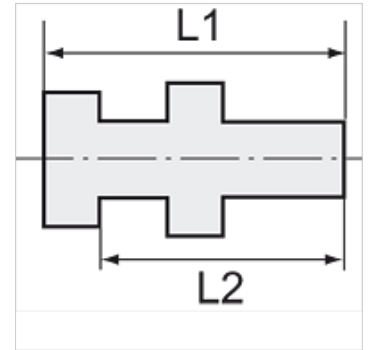
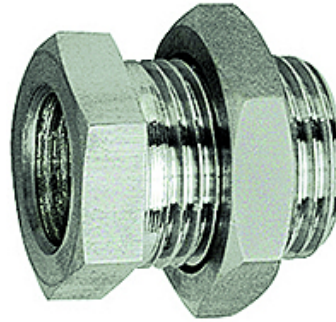
K-SCHOTTNIPPEL ES

Bulkhead nipples

HANSA FLEX

Características

Presión de funcionamiento	Max. 20 bar
Material	Acero fino 1.4571



Nota

The dimensions of the standard screw fittings may change slightly during the life of the catalogue as a result of optimisation processes.
Otras especificaciones a petición.

Información adicional

Further types and dimensions on request.

Artículo

Denominación	Rosca exterior	Rosca interior	L1 (mm)	L2 (mm)	SW1 (mm)	SW2 (mm)
K- 07 40 34 24	G 1/4	G 1/8	18,0	14,0	17	17
K- 07 40 34 25	G 3/8	G 1/4	22,0	17,0	19	24
K- 07 40 34 26	G 1/2	G 3/8	27,0	21,0	24	24