

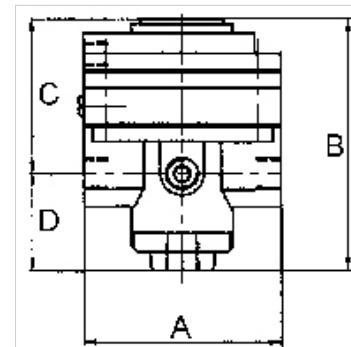
K-PRAEZI DRUCKREGL PNEU FERN

Precision pressure regulators

HANSA FLEX

Características

Presión de entrada	Max. 16 bar
Temper. de medios	max. 60 °C
Temp. entorno	Max. 60 °C
Medios	Micro-filtered, unoiled compressed air (0.01 µm)
Conex. manómetro	G 1/4
Flujo de paso	3000 l/min
Conex. de aireación	G 3/8 (for mounting a silencer)
Presión de control	Max. 10 bar
Conex. aire de mando	G 1/8
Material obturador	NBR
Carcasa	Die-cast zinc, painted black
Consumo de aire propio	6 l/min at Pin = 16 bar



Nota

Attention! A set of wearing parts cannot be supplied! These pressure regulators may only be opened in the factory! The given flow rates are based on the following parameters: 3000 l/min: P1: 5 bar, P2: 3 bar, $\Delta p \leq 0,1$ bar.

Otras especificaciones a petición.

Descripción

With high flow rate and large secondary relief port. Pneumatically controlled diaphragm pressure regulators with large secondary relief port for applications requiring an extremely accurate working pressure, especially at high flow rates. We recommend our »multifix« series of pilot controllers.

Información adicional

1500 l/min: P1: 10 bar, P2: 7 bar, $\Delta p \leq 0,1$ bar.

Artículo

Denominación	Rosca	Rango de regulación	A (mm)	B	C (mm)	D (mm)
K- 07 25 09 35	G 1/2	0.05 - 7 bar (max. 10 bar)	82,0	108,0 mm	64,5	43,5

Piezas de repuesto

K-HALTERBAUSATZ STANDARD	Holder
K-KM MS	Hexagonal lock nuts, brass
K-SCHALLDAEPFER VYON	Vyon silencers
K-FILTERELEMENT	Filter element
K-XV AGM 2	Double nipples, parallel male thread