

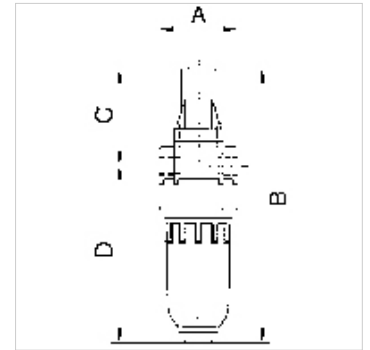
# K-NEBELOELER PC-BEHÄLTER STANDARD-MINI

Oil-mist lubricators with polycarbonate bowl

**HANSA FLEX**

## Características

<b>Presión de entrada</b>	Max. 16 bar (polycarbonate bowl), Max. 25 bar (metal bowl)
<b>Temper. de medios</b>	max. 60 °C
<b>Temp. entorno</b>	Max. 60 °C
<b>Flujo de paso</b>	650 l/min
<b>Material obturador</b>	NBR
<b>Carcasa</b>	Die-cast zinc, painted silver
<b>Suplem. de goteo</b>	PA (polycarbonate bowl), Zinc-glass-NBR (metal bowl)
<b>Tipo de aceite</b>	CL 32 acc. to DIN 51517 - ISO VG 32
<b>Medic. valor de flujo</b>	At P1 = 6 bar and pressure drop $\Delta p = 1$ bar
<b>Otras especific.</b>	User manual on request



## Descripción

Proportional lubricators in compact design, oil can be filled under pressure.

## Artículo

Denominación	Rosca	A (mm)	B	C (mm)	D (mm)	DN
K- 07 25 08 83	G 1/8	40,0	144,5 mm	49,5	95,0	5
K- 07 25 08 85	G 1/4	40,0	144,5 mm	49,5	95,0	5

## Piezas de repuesto

K-ERSATZBEHÄLTER MULTI MINI	Spare tank »multifix-mini« & »standard-mini«
K-TROPFAUFSATZ POLYCARBO	Drip attachment polycarbonate
K-TROPFAUFSATZ METALL	Drip attachment metal
K-LOESBARE DOPPELNIPPEL MS	Double nipples
K-XV AGM MS NI	Double nipples, parallel male thread, nickel-plated brass