

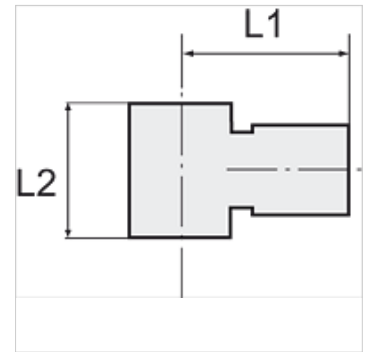
K-L-RINGSTUECK

Ring nipples, single

HANSA FLEX

Características

Presión de func. pulsante	Max. 10 bar
Presión	Max. 15 bar (depending on pipe quality)
Material de tubería adecuado	PVDF, PTFE, stainless steel, PA, PU
Norma	G thread acc. to DIN EN ISO 228-1
Temp. entorno	-20 °C to max. +150 °C (depending on pipe quality and diameter)
Material	Acero fino 1.4404
Material obturador	FKM



Nota

Otras especificaciones a petición.

Descripción

For use with aggressive media and in areas with corrosive outside influences, in the food processing industry and in hygienic and sanitary applications.

Artículo

Denominación	Rosca	para Ø exterior de tubo flexible	L1 (mm)	L2 (mm)
K- 07 40 47 10	G 1/8	4 mm	19,5	15,0
K- 07 40 47 11	G 1/8	6 mm	22,0	15,0
K- 07 40 47 12	G 1/8	8 mm	22,5	15,0
K- 07 40 47 08	G 1/4	6 mm	23,5	17,0
K- 07 40 47 09	G 1/4	8 mm	24,0	17,0
K- 07 40 47 07	G 1/4	10 mm	27,0	17,0
K- 07 40 47 13	G 3/8	10 mm	29,0	20,0
K- 07 40 47 14	G 3/8	12 mm	31,0	20,0
K- 07 40 47 06	G 1/2	12 mm	33,0	24,0