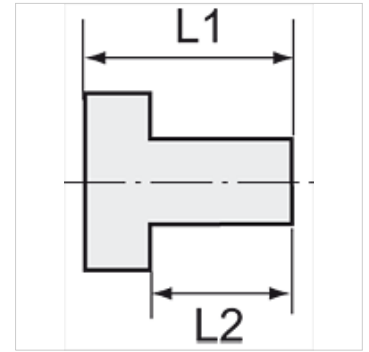


K-VHR IS BUND MS NI

Hexagon socket screw plugs with collar

Características

Temperatura de servicio	Max. 150 °C
Presión	Max. 60 bar
Construcción	Tapón roscado con hexágono interior
Material	Latón niquelado



Nota

The dimensions of the standard screw fittings may change slightly during the life of the catalogue as a result of optimisation processes. Otras especificaciones a petición.

Descripción

Suitable for air, water, oil, steam, etc.

Información adicional

Further types and dimensions on request.

Artículo

Denominación	Rosca	L1 (mm)	L2 (mm)	SW
K- 07 40 45 18	G 1/8	11,0	8,0	5 mm
K- 07 40 45 19	G 1/4	13,0	10,0	6 mm
K- 07 40 45 20	G 3/8	15,0	12,0	8 mm
K- 07 40 45 27	G 1/2	18,0	14,0	10 mm
K- 07 40 45 23	G 3/4	24,0	20,0	12 mm
K- 07 40 45 26	G 1	27,0	22,0	17 mm