

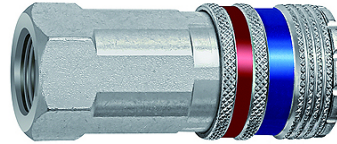
K-LKM S NW10 IG

Safety couplings DN 10, Innengewinde

HANSA FLEX

Características

Presión de servicio	Max. 16 bar
Flujo de aire	4.000 l/min (at 6 bar and $\Delta p = 0.5$ bar)
Temper. de medios	-20 °C to +100 °C
Material	Galvanised steel / brass
Muell	Stainless-steel
Material obturador	NBR



Nota

Otras especificaciones a petición.

Descripción

High-quality, robust and durable, one-hand quick disconnect safety couplings, with very high flow rate and only a small pressure drop. The coupling is released fully automatically in two steps. Air is relieved from the coupling before it is completely disconnected, to minimise the risk of injury to the operator from hose ends flying around. The plug is only disconnected from the coupling if the residual pressure has dropped below 0.3 bar. The dreaded "whiplash effect" is thus avoided and the risk of injury virtually eliminated. This safety version conforms to ISO-Standard DIN EN ISO 4414. Suitable for all applications with an above-average air consumption and characterised by extreme conditions.

Artículo

Denominación	Conexión	Longitud (mm)	SW (mm)
K- 07 35 13 07	G 3/8 female	62,3	24
K- 07 35 13 00	G 1/2 female	67,3	25
K- 07 35 13 05	G 3/4 female	64,5	32

Elementos adicionales

K-NIPPEL KUPPL NW10 AG ROBU	Plugs for couplings DN 10, hardened, galvanised steel, robust type, male
K-NIPPEL KUPPL NW10 IG ROBU	Plugs for couplings DN 10, hardened, galvanised steel, robust type, female
K-TUE 1 ST K VZ	Stems for couplings DN 10, hardened, galvanised steel, robust type