

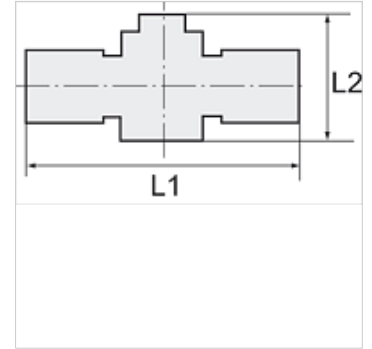
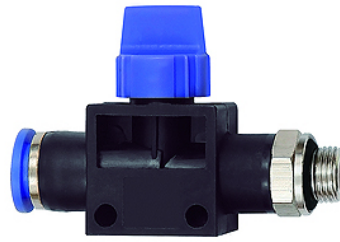
# K-WV 3/2 STECK GEW SCHL

3/2-way pilot valves with male thread and plug connection, flow direction from port to tube, parallel male thread with O-ring

**HANSA FLEX**

## Características

Presión de funcionamiento	Max. 15 bar, coarse vacuum
Campo de aplicación	Air, vacuum
Mangueras recomendadas	PU or PA (nylon)
Medios	Compressed air and all gases or liquids that are compatible with the materials
Rango de temperatura	-20 °C to +80 °C
Superficie de obturación	Parallel version: O-ring in housing, Conical version: thread coating
Material	Plastic, Nickel plated brass
Anillo de presión	Plastic



## Nota

Otras especificaciones a petición.

## Descripción

Push-in fittings series manufactured in plastic and nickel-plated brass. All parts are suitable for use with hoses, tubes or pipes made of plastic and copper.

## Artículo

Denominación	Rosca	para Ø exterior de tubo flexible	L1 (mm)	L2 (mm)	SW
K- 07 40 43 85	G 1/8	6 mm	58,1	41,5	14 mm
K- 07 40 43 86	G 1/8	8 mm	58,5	41,5	14 mm
K- 07 40 43 83	G 1/4	6 mm	59,6	41,5	14 mm
K- 07 40 43 84	G 1/4	8 mm	60,0	41,5	17 mm
K- 07 40 43 81	G 1/4	10 mm	70,9	46,0	17 mm
K- 07 40 43 82	G 1/4	12 mm	70,9	46,0	21 mm
K- 07 40 43 89	G 3/8	6 mm	61,1	41,5	14 mm
K- 07 40 43 90	G 3/8	8 mm	61,5	41,5	17 mm
K- 07 40 43 87	G 3/8	10 mm	72,4	46,0	20 mm
K- 07 40 43 88	G 3/8	12 mm	71,9	46,0	21 mm
K- 07 40 43 79	G 1/2	10 mm	74,9	46,0	24 mm
K- 07 40 43 80	G 1/2	12 mm	75,4	46,0	24 mm