

K-VT 2 ABGAENGE G-MINI

Manifolds

HANSA FLEX

Características

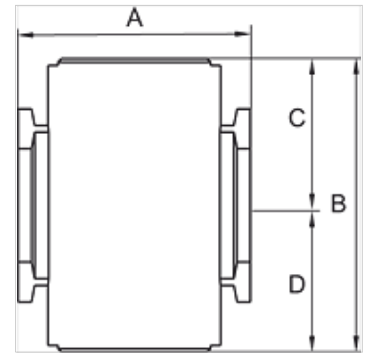
Presión de entrada 0 - 9 bar

Temper. de medios max. 70 °C

Temp. entorno Max. 70 °C

Carcasa Die-cast aluminium

Otras especific. User manual on request



Artículo

| Denominación | Rosca | A (mm) | B | C (mm) | D (mm) | Tamaño constructivo |
|----------------|-------|-----------|---------|-----------|-----------|---------------------|
| K- 07 25 12 31 | G 1/8 | 28,5 | 36,0 mm | 18,0 | 18,0 | 200 |
| K- 07 25 12 32 | G 1/4 | 28,5 | 36,0 mm | 18,0 | 18,0 | 200 |

Accesorios

K-VERBINDUNGELEMENTE Connecting sets

K-WANDHALTER Wall bracket