

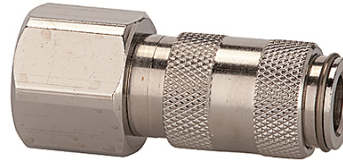
# K-SVKM NW 2,7 IG VA

Quick disconnect couplings DN 2.7, stainless steel 1.4404, female

**HANSA FLEX**

## Características

|                                  |   |
|----------------------------------|---|
| Presión de servicio              | 0 - 35 bar, maximum static working pressure (non-pulsating) |
| Flujo de aire                    | 165 l/min (at 6 bar and $\Delta p = 0.5$ bar)               |
| Temper. de medios                | -15 °C to +200 °C   |
| Carcasa, manguito, cuerpo válv   | Stainless steel 1.4404                                      |
| Muelles, anillo de muelle, bolas | Stainless steel 1.4404                                      |
| Material obturador               | FKM   |



## Nota

Otras especificaciones a petición.

## Descripción

One-hand quick disconnect couplings, one side sealing, extremely compact with a large bore and only a small pressure drop. Ideal for: Medical equipment, chemical and pharmaceutical industry, laboratories, plant construction and butchers.

## Artículo

| Denominación   | Conexión     | Longitud (mm) | SW (mm) |
|----------------|--------------|---------------|---------|
| K- 07 35 12 47 | M 5 female   | 25,0          | 9       |
| K- 07 35 12 48 | G 1/8 female | 28,0          | 12      |