

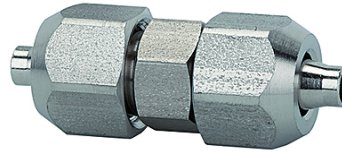
# K-VERBINDER VA

Unions, stainless steel

**HANSA FLEX**

## Características

Rango de presión	Max. 25 bar
Mangueras recomendadas	PTFE hose
Rango de temperatura	-40 °C to +200 °C (depending on the hose quality and diameter)
Material	Acero fino 1.4404
Obturac.	Pure metal



## Nota

Otras especificaciones a petición.

## Descripción

Supplied without seals. For use with corrosive media and at high temperatures. Screw fitting series made of stainless steel for all applications where compliance with strict tightness, pressure and temperature requirements is essential. The parts are manufactured without rubber seals, in other words they are ideal for very high temperatures or for use with corrosive liquids, e.g. in cases when FPM is no longer suitable.

## Artículo

Denominación	para tubo flexible	L1 (mm)	SW1 (mm)	SW2 (mm)
K- 07 40 30 23	6 mm / 4 mm	34,0	12	10
K- 07 40 30 24	8 mm / 6 mm	35,0	14	12
K- 07 40 30 22	10 mm / 8 mm	39,0	16	14