

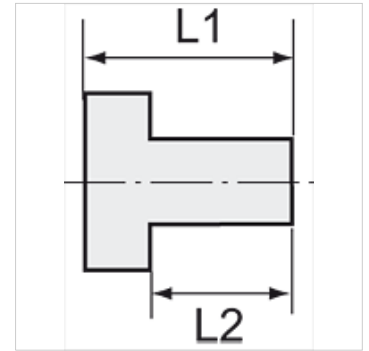
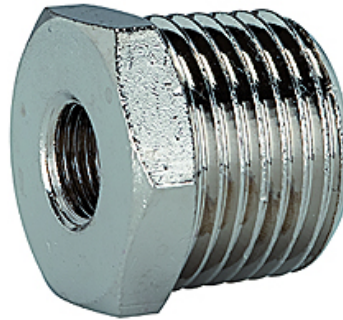
# K-RD NIPPEL AGRK IGR MS NI

Reducing nipples, conical male thread, parallel female thread - nickel-plated brass

**HANSA FLEX**

## Características

Temperatura de servicio	Max. 150 °C
Presión	Max. 60 bar
Material	Latón niquelado



## Nota

The dimensions of the standard screw fittings may change slightly during the life of the catalogue as a result of optimisation processes. Otras especificaciones a petición.

## Descripción

Suitable for air, water, oil, steam, etc.

## Información adicional

Further types and dimensions on request.

## Artículo

Denominación	Rosca exterior	Rosca interior	L1 (mm)	L2 (mm)	SW
K- 07 40 15 66	R 1/4	G 1/8	16,0	11,0	14 mm
K- 07 40 15 67	R 3/8	G 1/8	17,0	11,5	17 mm
K- 07 40 15 68	R 3/8	G 1/4	17,0	11,5	17 mm
K- 07 40 15 69	R 1/2	G 1/8	19,5	14,0	22 mm
K- 07 40 15 70	R 1/2	G 1/4	20,0	14,0	22 mm
K- 07 40 15 71	R 1/2	G 3/8	20,0	14,0	22 mm
K- 07 40 15 72	R 3/4	G 3/8	23,0	16,5	27 mm
K- 07 40 15 73	R 3/4	G 1/2	23,0	16,5	27 mm
K- 07 40 15 74	R 1	G 1/2	25,0	16,0	34 mm
K- 07 40 15 75	R 1	G 3/4	25,0	18,0	34 mm