

K-TUE IG MS NI

Female stems with parallel female thread - nickel-plated brass

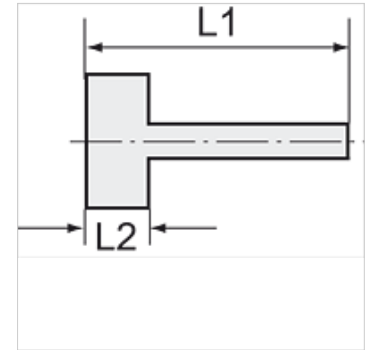
HANSA FLEX

Características

Temperatura de servicio Max. 150 °C

Presión Max. 60 bar

Material Latón niquelado



Nota

The dimensions of the standard screw fittings may change slightly during the life of the catalogue as a result of optimisation processes. Otras especificaciones a petición.

Descripción

Suitable for air, water, oil, steam, etc.

Información adicional

Further types and dimensions on request.

Artículo

Denominación	Rosca	para tubo flexible	L1 (mm)	L2 (mm)	SW
K- 07 40 11 76	G 1/8	LW 6 mm	28,0	8,5	12 mm
K- 07 40 11 77	G 1/8	LW 8 mm	28,0	8,5	12 mm
K- 07 40 11 78	G 1/8	LW 9 mm	28,0	8,5	12 mm
K- 07 40 11 79	G 1/8	LW 10 mm	28,0	8,5	12 mm
K- 07 40 11 80	G 1/4	LW 6 mm	33,0	10,0	15 mm
K- 07 40 11 81	G 1/4	LW 8 mm	33,0	10,0	15 mm
K- 07 40 11 82	G 1/4	LW 9 mm	33,0	10,0	15 mm
K- 07 40 11 83	G 1/4	LW 10 mm	33,0	10,0	15 mm
K- 07 40 11 84	G 1/4	LW 12 mm	33,0	10,0	15 mm
K- 07 40 11 85	G 3/8	LW 8 mm	35,0	12,0	19 mm
K- 07 40 11 86	G 3/8	LW 10 mm	35,0	12,0	19 mm
K- 07 40 11 87	G 3/8	LW 12 mm	35,0	12,0	19 mm
K- 07 40 11 88	G 3/8	LW 14 mm	35,0	12,0	19 mm
K- 07 40 11 89	G 1/2	LW 10 mm	38,0	14,0	25 mm
K- 07 40 11 90	G 1/2	LW 12 mm	41,0	14,0	25 mm
K- 07 40 11 91	G 1/2	LW 14 mm	41,0	14,0	25 mm