

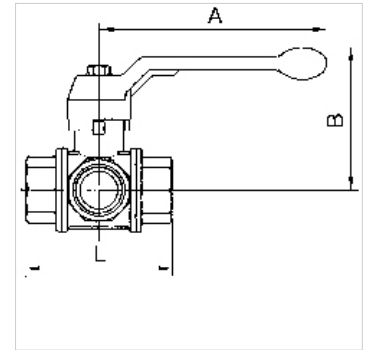
# K-3 BKR T VA LEICHT

3-way ball valves, T-bore, lightweight type

**HANSA FLEX**

## Características

|                      |                           |
|----------------------|---------------------------|
| Descripción de rosca | Rp thread acc. to ISO 7-1 |
| Temper. de medios    | -15 °C to max. +100 °C    |
| Material obturador   | PTFE                      |
| Muell                | Stainless-steel           |
| Carcasa y bola       | Nickel-plated brass       |
| Palanca manual       | Aluminium, painted black  |



## Nota

Otras especificaciones a petición.

## Descripción

Sealing on all sides with T-bore. In contrast to the 1084 series, the lever of this model can only be turned 90° rather than 180°. Only two valve positions are therefore possible instead of four.

## Artículo

| Denominación   | DN | Rosca    | A<br>(mm) | B<br>(mm) | Bola con orificio | L<br>(mm) | Presión máx. de servicio a 20°C<br>(bar) |
|----------------|----|----------|-----------|-----------|-------------------|-----------|--|
| K- 07 30 19 68 | 15 | Rp 1/2   | 130,0     | 85,0      | 13                | 80,0      | 40                                       |
| K- 07 30 19 69 | 20 | Rp 3/4   | 160,0     | 98,0      | 18                | 96,0      | 40                                       |
| K- 07 30 19 70 | 25 | Rp 1     | 160,0     | 102,0     | 23                | 113,0     | 25                                       |
| K- 07 30 19 71 | 32 | Rp 1 1/4 | 195,0     | 121,0     | 29                | 130,0     | 16                                       |
| K- 07 30 19 72 | 40 | Rp 1 1/2 | 195,0     | 125,0     | 35                | 147,0     | 16                                       |
| K- 07 30 19 73 | 50 | Rp 2     | 235,0     | 141,0     | 44                | 169,0     | 16                                       |