

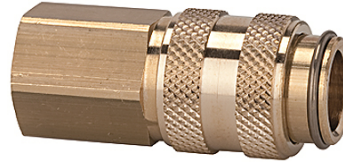
K-SVKM NW 5 ABSP IG MS

Quick disconnect couplings DN 5, both sides sealing, brass, female

HANSA FLEX

Características

Presión de servicio	0 - 35 bar, maximum static working pressure (non-pulsating)
Flujo de aire	310 l/min (at 6 bar and $\Delta p = 0.5$ bar)
Temper. de medios	-20 °C to +100 °C
Carcasa, manguito, cuerpo válv	Brass
Muelles, anillo de muelle, bolas	stain less steel
Material obturador	NBR



Nota

Otras especificaciones a petición.

Descripción

Both the coupling and the self-sealing plug are fitted with a valve. Connection: Both valves open and the medium is allowed to pass. Disconnection: Both valves close and the medium is prevented from escaping.

Artículo

Denominación	Conexión	Longitud (mm)	SW (mm)
K- 07 35 06 75	G 1/8 female	38,0	14
K- 07 35 06 76	G 1/4 female	38,0	17