

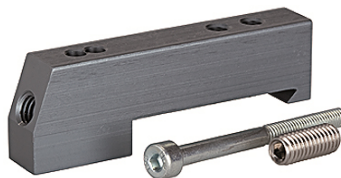
K-ADA HUTPROFIL

Adapter for DIN rail

HANSA FLEX

Características

Medios	Filtered, unlubricated or lubricated compressed air. If lubrication is used, it must be continuous.
Presión de funcionamiento	Max. vacuum 10 bar (external pilots), 3 to 7 bar (internal pilots as standard)
Presión de control	3 - 7 bar
Rango de temperatura	-10 °C to +60 °C
Flujo de paso	200 NI/min (Ø 4), 500 NI/min (Ø 6), 800 NI/min (Ø 8)
No de controles	Max. 16 (e.g. 16 spring return valves)
Accionamiento aux. manual	Latching (bistable), Monostable (non-latching) version also available on request
Consumo de potencia	0.6 W per pilot
Tipo de protecc.	IP 65



Nota

Otras especificaciones a petición.

Descripción

These compact valve terminals, with a maximum flow rate of 800 NI/min, can be individually adapted to the specific conditions of each application thanks to the wide range of functions and various input and intermediate plates. Since each valve terminal is a customer-specific combination of a series of individual elements, the catalogue only lists the available input, intermediate and end plates as well as the different valve discs and the 25-pin multi-pole connectors.

Información adicional

Important: The scope of supply does not include a connector. Please order separately.

Artículo

Denominación	Definición
K- 07 15 22 43	Adapter for DIN rail