

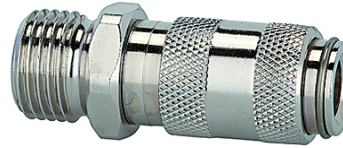
K-SVKM NW 2,7 AG VA

Quick disconnect couplings DN 2.7, stainless steel 1.4404, male

HANSA FLEX

Características

Presión de servicio	0 - 35 bar, maximum static working pressure (non-pulsating)
Flujo de aire	165 l/min (at 6 bar and $\Delta p = 0.5$ bar)
Temper. de medios	-15 °C to +200 °C
Carcasa, manguito, cuerpo válv	Stainless steel 1.4404
Muelles, anillo de muelle, bolas	Stainless steel 1.4404
Material obturador	FKM



Nota

Otras especificaciones a petición.

Descripción

One-hand quick disconnect couplings, one side sealing, extremely compact with a large bore and only a small pressure drop. Ideal for: Medical equipment, chemical and pharmaceutical industry, laboratories, plant construction and butchers.

Artículo

Denominación	Conexión	Longitud (mm)	SW (mm)
K- 07 35 12 45	M 5 male	26,0	9
K- 07 35 12 46	G 1/8 male	28,0	11