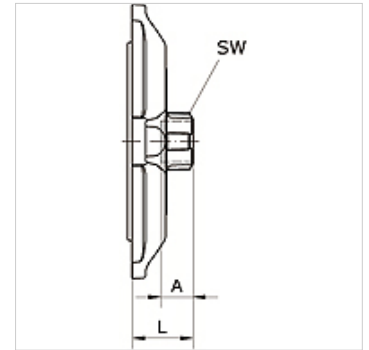


# K-RED FLANSCH 80-100 IG INFI

Reducing flange Ø 80 mm/Ø 110 mm with female thread

## Características

<b>Medios</b>	Compressed air, vacuum, inert gases
<b>Presión de servicio</b>	-0,99 bar - 15 bar
<b>Rango de temperatura</b>	-20 °C to +80 °C
<b>Anillo guía</b>	Technopolymer
<b>Carcasa</b>	Aluminium, treated surface
<b>Tornillo Allen</b>	Galvanised steel
<b>Anillo de apriete</b>	Stainless steel 1.4301
<b>Tuerca</b>	Aluminium, surface treated
<b>Junta tórica</b>	NBR
<b>Tuerca autobloqueante</b>	Galvanised steel
<b>Anillos de fijación</b>	Technopolymer



## Artículo

Denominación	Conexión	para Ø exterior tubo mm	A (mm)	L (mm)	SW (mm)
K- 07 40 55 23	G 3/4	80	14,5	42,0	42
K- 07 40 55 24	G 1	80	17,0	42,0	49
K- 07 40 55 25	G 1 1/2	80	20,0	42,0	66
K- 07 40 55 26	G 2	80	22,0	42,0	80
K- 07 40 54 73	G 3/4	110	14,5	48,0	42
K- 07 40 54 74	G 1	110	17,0	48,0	49
K- 07 40 54 75	G 1 1/2	110	20,0	48,0	66
K- 07 40 54 76	G 2	110	22,0	48,0	80