

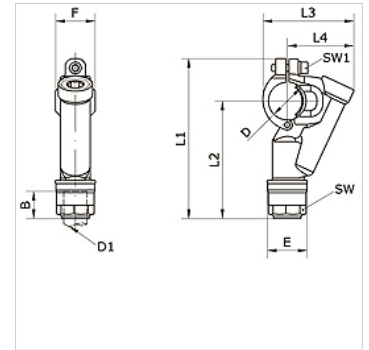
# K-SCHNELLFLAN 20-63 INFI

Quick assembly Ø 20 mm – Ø 63 mm

**HANSA FLEX**

## Características

|                         |   |
|-------------------------|---|
| Posición de instalación | horizontally, vertically  |
| Principio de funcionam. | Installation of a new connector without opening the pipe system |
| Material                | Latón niquelado   |



## Artículo

| Denominación   | Ø exterior tubo | B<br>(mm) | D<br>(mm) | D1<br>(mm) | E<br>(mm) | F<br>(mm) | L1<br>(mm) | L2<br>(mm) | L3<br>(mm) | L4<br>(mm) | SW<br>(mm) | SW1<br>(mm) |
|----------------|-----------------|-----------|-----------|------------|-----------|-----------|------------|------------|------------|------------|------------|-------------|
| K- 07 40 54 44 | 32 - 20 mm      | 31,5      | 32        | 20,0       | 34,5      | 34,0      | 136,5      | 100,5      | 78,0       | 57,0       | 30         | 5           |
| K- 07 40 54 45 | 32 - 25 mm      | 38,5      | 32        | 25,0       | 42,5      | 34,0      | 144,5      | 108,5      | 78,0       | 57,0       | 35         | 5           |
| K- 07 40 54 46 | 40 - 20 mm      | 31,5      | 40        | 20,0       | 34,5      | 34,0      | 148,5      | 108,0      | 89,5       | 64,0       | 30         | 5           |
| K- 07 40 54 47 | 40 - 25 mm      | 38,5      | 40        | 25,0       | 42,5      | 34,0      | 156,5      | 116,0      | 89,5       | 64,0       | 35         | 5           |
| K- 07 40 54 48 | 50 - 20 mm      | 31,5      | 50        | 20,0       | 34,5      | 42,5      | 167,5      | 118,5      | 105,5      | 74,0       | 30         | 6           |
| K- 07 40 54 49 | 50 - 25 mm      | 38,5      | 50        | 25,0       | 42,5      | 42,5      | 175,5      | 126,5      | 105,5      | 74,0       | 35         | 6           |
| K- 07 40 54 50 | 63 - 20 mm      | 31,5      | 63        | 20,0       | 34,5      | 42,5      | 185,0      | 130,0      | 119,0      | 81,0       | 30         | 6           |
| K- 07 40 54 51 | 63 - 25 mm      | 38,5      | 63        | 25,0       | 42,5      | 42,5      | 193,0      | 138,0      | 119,0      | 81,0       | 35         | 6           |