

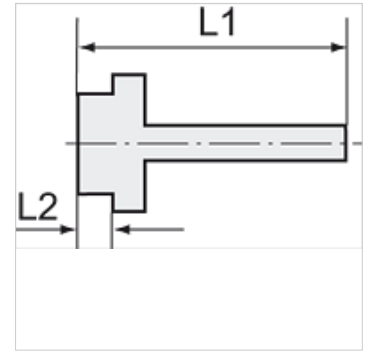
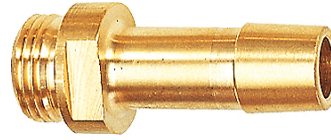
# K-EST 12 MS

Male stems for coupling NW12 MS

**HANSA FLEX**

## Características

Presión de funcionamiento	10 bar
Temper. de medios	max. +90 °C
Temp. entorno	Max. +90 °C
Material	Brass with a bare metal surface



## Nota

The dimensions of the standard screw fittings may change slightly during the life of the catalogue as a result of optimisation processes. Otras especificaciones a petición.

## Información adicional

Further types and dimensions on request.

## Artículo

Denominación	Rosca	para tubo flexible	L1 (mm)	L2 (mm)	SW
K- 07 35 00 88	G 1/2	LW 16 mm	58,0	10,0	20 mm