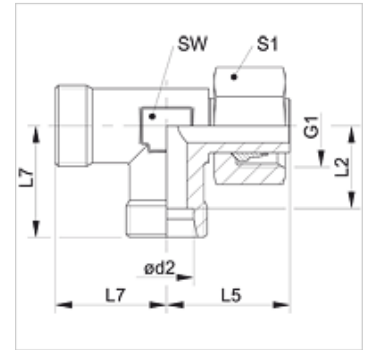


Omadused

| | |
|-------------------|--|
| Ühendus 1 | Meetriline mutrikeere |
| Tihenditüüp 1 | Toruliitmik, eelpaigaldatud |
| Ühendus 2 + 3 | M-keere välis, silindriline |
| Tihenditüüp 2 + 3 | 24° sisekoonus |
| Tüüp | Suunatav liitmik |
| Ehitustüüp | L-kujuline |
| Tavaline | DIN 3954 |
| Komplektis | Liitmik (ilma mutri ja lõikurrõngata) eelpaigaldatud |
| Materjal | Roostevaba teras |



Vihje

Viiteid monteerimise, paigaldamise, survetugevuse ja lubatud töötemperatuuride kohta leiata toruühenduste tehnilisest juhendist.

Artikkel

| Märgistus | Ehitusseeria | Töörõhk bar | Ø d2 (mm) | G1 | L2 (mm) | L5 (mm) | L7 (mm) | SW (mm) | S1 |
|------------------|--------------|-------------|-----------|------------|---------|---------|---------|---------|----|
| XVEL NW 04 HL VA | L | PN 315 | 6 | M 12 x 1,5 | 12,0 | 26,0 | 19 | 12 | 14 |
| XVEL NW 06 HL VA | L | PN 315 | 8 | M 14 x 1,5 | 14,0 | 27,5 | 21 | 12 | 17 |
| XVEL NW 08 HL VA | L | PN 315 | 10 | M 16 x 1,5 | 15,0 | 29,0 | 22 | 14 | 19 |
| XVEL NW 10 HL VA | L | PN 315 | 12 | M 18 x 1,5 | 17,0 | 29,5 | 24 | 17 | 22 |
| XVEL NW 13 HL VA | L | PN 315 | 15 | M 22 x 1,5 | 21,0 | 32,5 | 28 | 19 | 27 |
| XVEL NW 16 HL VA | L | PN 315 | 18 | M 26 x 1,5 | 23,5 | 35,5 | 31 | 24 | 32 |
| XVEL NW 20 HL VA | L | PN 160 | 22 | M 30 x 2 | 27,5 | 38,5 | 35 | 27 | 36 |
| XVEL NW 25 HL VA | L | PN 160 | 28 | M 36 x 2 | 30,5 | 41,5 | 38 | 36 | 41 |
| XVEL NW 32 HL VA | L | PN 160 | 35 | M 45 x 2 | 34,5 | 51,0 | 45 | 41 | 50 |
| XVEL NW 40 HL VA | L | PN 160 | 42 | M 52 x 2 | 40,0 | 56,0 | 51 | 50 | 60 |
| XVEL NW 03 HS VA | S | PN 630 | 6 | M 14 x 1,5 | 16,0 | 27,0 | 23 | 12 | 17 |
| XVEL NW 04 HS VA | S | PN 630 | 8 | M 16 x 1,5 | 17,0 | 27,5 | 24 | 14 | 19 |
| XVEL NW 06 HS VA | S | PN 630 | 10 | M 18 x 1,5 | 17,5 | 30,0 | 25 | 17 | 22 |
| XVEL NW 08 HS VA | S | PN 630 | 12 | M 20 x 1,5 | 21,5 | 31,0 | 29 | 17 | 24 |
| XVEL NW 10 HS VA | S | PN 630 | 14 | M 22 x 1,5 | 22,0 | 35,0 | 30 | 19 | 27 |
| XVEL NW 13 HS VA | S | PN 400 | 16 | M 24 x 1,5 | 24,5 | 36,5 | 33 | 24 | 30 |
| XVEL NW 16 HS VA | S | PN 400 | 20 | M 30 x 2 | 26,5 | 44,5 | 37 | 27 | 36 |
| XVEL NW 20 HS VA | S | PN 400 | 25 | M 36 x 2 | 30,0 | 50,0 | 42 | 36 | 46 |
| XVEL NW 25 HS VA | S | PN 400 | 30 | M 42 x 2 | 35,5 | 55,0 | 49 | 41 | 50 |
| XVEL NW 32 HS VA | S | PN 315 | 38 | M 52 x 2 | 41,0 | 63,0 | 57 | 50 | 60 |

Ehitusseeria: LL = väga kerge L = kerge S = raske – PN = nimirõhk PB = maks. töörõhk – Ø d2 = toru välisläbimõõt

Toote variandid

| | |
|--------|---------------------------------------|
| XVEL | Ühendus, L-kujuline, Teras |
| VEL VA | Ühendus, L-kujuline, Roostevaba teras |