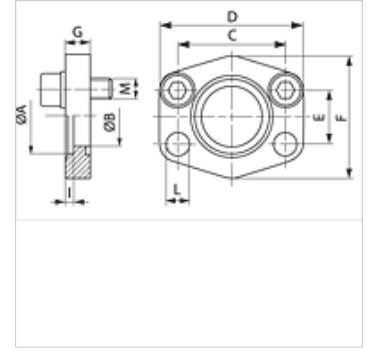
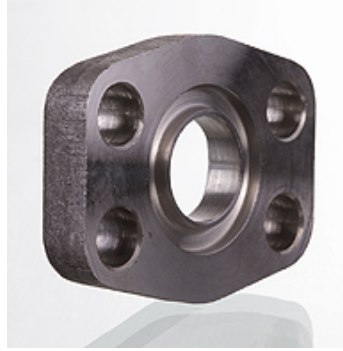


# AFC S (3000 PSI)

## SAE sissekeevitatav flants, ND 40

### Omadused

|              |                            |
|--------------|----------------------------|
| Surverida    | 3000 psi                   |
| Tavaline     | SAE J 518 C<br>ISO 6162    |
| Lisa         | ND 40                      |
| Ehitustüüp   | Sirge                      |
| Tüüp         | SAE sissekeevitatav flants |
| Paigaldus    | Poldi ava                  |
| Komplektis   | ainult flants              |
| Materjal     | S355J2G3 (ST52.3)          |
| Pinnatöötlus | must, õlitatud             |



### Vihje

Antud maksimaalne töörohk kehtib flantsi kohta! Tegelik töörohu määrab toru (seinatugevus) ja toru omadustest!  
Soovitav on kasutada veergudes M (metr) või M (unc) nimetatud polte.

### Artikkel

| Märgistus | PB 10.9<br>(bar) | Ehitussuurus | Toru         | A<br>(mm) | Ø B<br>(mm) | C<br>(mm) | D<br>(mm) | E<br>(mm) | F<br>(mm) | G<br>(mm) | I<br>(mm) | L<br>(mm) | M meetrit |
|-----------|------------------|--------------|--------------|-----------|-------------|-----------|-----------|-----------|-----------|-----------|-----------|-----------|-----------|
| AFC 80 S  | 40               | 1/2"         | 22 x 2       | 22,5      | 15          | 38,1      | 56        | 17,5      | 46        | 10        | 3         | 9,0       | M 8 x 25  |
| AFC 100 S | 40               | 3/4"         | 28 x 2       | 28,5      | 20          | 47,6      | 65        | 22,2      | 50        | 12        | 4         | 11,0      | M 10 x 30 |
| AFC 102 S | 40               | 1"           | 35 x 2       | 35,5      | 29          | 52,4      | 70        | 26,2      | 55        | 12        | 4         | 11,0      | M 10 x 30 |
| AFC 104 S | 40               | 1.1/4"       | 42 x 2       | 42,5      | 34          | 58,7      | 79        | 30,2      | 68        | 12        | 4         | 11,5      | M 10 x 30 |
| AFC 106 S | 40               | 1.1/2"       | 48,3 x 3,25  | 49,0      | 42          | 69,9      | 93        | 35,7      | 78        | 15        | 4         | 13,5      | M 12 x 35 |
| AFC 108 S | 40               | 2"           | 60,3 x 3,65  | 61,0      | 53          | 77,8      | 102       | 42,9      | 90        | 15        | 4         | 13,5      | M 12 x 35 |
| AFC 110 S | 40               | 2.1/2"       | 76,1 x 3,65  | 77,0      | 64          | 88,9      | 114       | 50,8      | 105       | 15        | 4         | 13,5      | M 12 x 35 |
| AFC 112 S | 40               | 3"           | 88,9 x 4,05  | 90,0      | 80          | 106,4     | 134       | 61,9      | 124       | 20        | 5         | 17,5      | M 16 x 40 |
| AFC 114 S | 35               | 3.1/2"       | 101,6 x 4,5  | 103,0     | 93          | 120,7     | 152       | 69,9      | 136       | 20        | 5         | 17,5      | M 16 x 40 |
| AFC 116 S | 35               | 4"           | 114,3 x 4,5  | 116,0     | 105         | 130,2     | 162       | 77,8      | 146       | 25        | 6         | 17,5      | M 16 x 45 |
| AFC 118 S | 35               | 5"           | 139,7 x 4,85 | 141,0     | 126         | 152,4     | 190       | 92,1      | 170       | 28        | 8         | 17,5      | M 16 x 45 |

PN = nimirõhk PB = maks. töörohk

### Toote variandid

AFC S M (3000 PSI) SAE sissekeevitatav flants, ND 40, M-keermega poldi komplekti ja O-rõngaga