

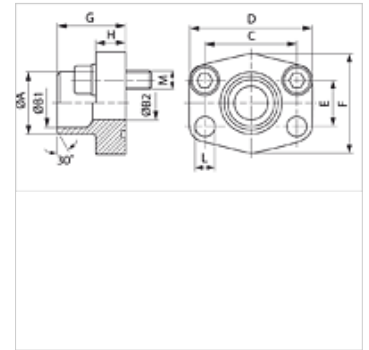
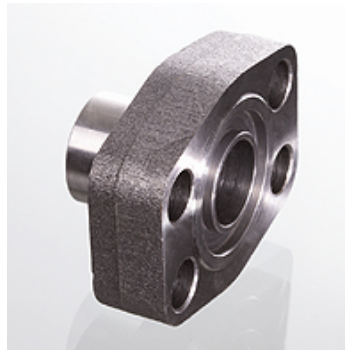
# AFS SRE (3000 PSI)

SAE-keevitatav liitmik

**HANSA FLEX**

## Omadused

|              |                         |
|--------------|-------------------------|
| Surverida    | 3000 psi                |
| Tavaline     | SAE J 518 C<br>ISO 6162 |
| Ehitustüüp   | Sirge                   |
| Tüüp         | SAE-keevitatav liitmik  |
| Paigaldus    | Poldi ava               |
| Komplektis   | ainult flants           |
| Materjal     | S355J2G3 (ST52.3)       |
| Pinnatöötlus | must, õlitatud          |



## Vihje

Antud maksimaalne töörohk kehtib flantsi kohta! Tegeliku töörohu määrab toru (seinatugevus) ja toru omadustest!

Soovitav on kasutada veergudes M (metr) või M (unc) nimetatud polte.

## Artikkel

| Märgistus        | PB 10.9<br>(bar) | Ehitussuurus | Toru       | A<br>(mm) | B1<br>(mm) | B2<br>(mm) | G<br>(mm) | C<br>(mm) | E<br>(mm) | H<br>(mm) | L<br>(mm) | M meetrit | M unc          |
|------------------|------------------|--------------|------------|-----------|------------|------------|-----------|-----------|-----------|-----------|-----------|-----------|----------------|
| AFS 80 SRE 20    | 350              | 1/2"         | 20 x 3     | 20        | 14,0       | 14         | 35,0      | 38,1      | 17,5      | 16,0      | 9,0       | M 8 x 30  | 5/16" x 1.1/4" |
| AFS 80 SRE 22    | 350              | 1/2"         | 22 x 3     | 22        | 16,0       | 13         | 35,0      | 38,1      | 17,5      | 16,0      | 9,0       | M 8 x 30  | 5/16" x 1.1/4" |
| AFS 100 SRE 25   | 350              | 3/4"         | 25 x 3     | 25        | 19,0       | 19         | 36,0      | 47,6      | 22,2      | 18,0      | 11,0      | M 10 x 35 | 3/8" x 1.1/2"  |
| AFS 100 SRE 28   | 350              | 3/4"         | 28 x 3     | 28        | 21,5       | 19         | 36,0      | 47,6      | 22,2      | 18,0      | 11,0      | M 10 x 35 | 3/8" x 1.1/2"  |
| AFS 102 SRE 30   | 315              | 1"           | 30 x 4     | 30        | 22,0       | 22         | 38,0      | 52,4      | 26,2      | 18,0      | 11,0      | M 10 x 35 | 3/8" x 1.1/2"  |
| AFS 102 SRE 35   | 315              | 1"           | 35 x 4     | 35        | 27,0       | 25         | 38,0      | 52,4      | 26,2      | 18,0      | 11,0      | M 10 x 35 | 3/8" x 1.1/2"  |
| AFS 104 SRE 38   | 250              | 1.1/4"       | 38 x 4     | 38        | 30,0       | 30         | 41,0      | 58,7      | 30,2      | 21,0      | 11,5      | M 10 x 40 | 7/16" x 1.1/2" |
| AFS 104 SRE 42   | 250              | 1.1/4"       | 42 x 3     | 43        | 36,0       | 31         | 41,0      | 58,7      | 30,2      | 21,0      | 11,5      | M 10 x 40 | 7/16" x 1.1/2" |
| AFS 106 SRE 38   | 200              | 1.1/2"       | 38 x 4     | 38        | 30,0       | 30         | 44,0      | 69,9      | 35,7      | 25,0      | 13,5      | M 12 x 45 | 1/2" x 1.3/4"  |
| AFS 106 SRE 42   | 200              | 1.1/2"       | 42 x 3     | 42        | 36,0       | 36         | 44,0      | 69,9      | 35,7      | 25,0      | 13,5      | M 12 x 45 | 1/2" x 1.3/4"  |
| AFS 106 SRE 48.3 | 200              | 1.1/2"       | 48,3 x 4,5 | 49        | 38,0       | 38         | 44,0      | 69,9      | 35,7      | 25,0      | 13,5      | M 12 x 45 | 1/2" x 1.3/4"  |
| AFS 108 SRE 60   | 200              | 2"           | 60,3 x 5,6 | 61        | 49,0       | 49         | 45,0      | 77,8      | 42,9      | 25,0      | 13,5      | M 12 x 45 | 1/2" x 1.3/4"  |
| AFS 110 SRE 76   | 160              | 2.1/2"       | 76,1 x 7,1 | 77        | 62,0       | 62         | 50,0      | 88,9      | 50,8      | 25,0      | 13,5      | M 12 x 45 | 1/2" x 1.3/4"  |
| AFS 112 SRE 76   | 160              | 3"           | 76,1 x 7,1 | 77        | 62,0       | 62         | 51,0      | 106,4     | 61,9      | 26,0      | 17,5      | M 16 x 50 | 5/8" x 2"      |

PN = nimirõhk PB = maks. töörohk

## Toote variandid

|                             |   |
|-----------------------------|---|
| AFS SRE M (3000 / 6000 PSI) | SAE-keevitatav liitmik, M-keermega poldi komplekti ja O-rõngaga       |
| AFS SRE U (3000 / 6000 PSI) | SAE-keevitatav liitmik, meetrilise UNC-kruvide komplekti ja O-rõngaga |